

## RACK1 RABBIT MAB

**Cat.#:** N262802

**Product Name:** Anti-RACK1 Rabbit Monoclonal Antibody

**Synonyms:** H12.3; HLC-7; PIG21; RACK1; Gnb2-rs1

**UNIPROT ID:** P63244

**Background:** Seems to bind protein kinase C acting as an intracellular receptor to anchor the activated PKC to the cytoskeleton. May be involved in up-regulation of the activity of kinases such as PKC via binding to KRT1.

**Immunogen:** A synthetic peptide of human RACK1

**Applications:** WB,IHC-P

**Recommended Dilutions:** WB: 1/500-1/1000 IHC: 1/50-1/100

**Host Species:** Rabbit

**Clonality:** Rabbit Monoclonal

**Clone ID:** R02-1K6

**MW:** Calculated MW: 35 kDa; Observed MW: 35 kDa

**Isotype:** IgG

**Purification:** Affinity Purified

**Species Reactivity:** Human,Mouse,Rat

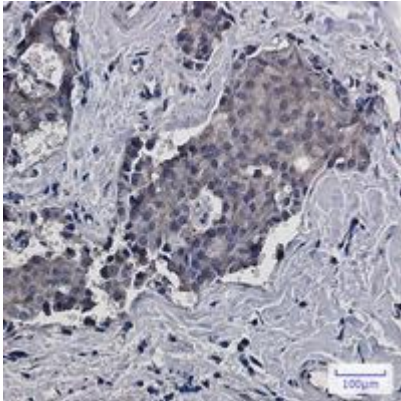
**Conjugation:** Unconjugated

**Modification:** Unmodified

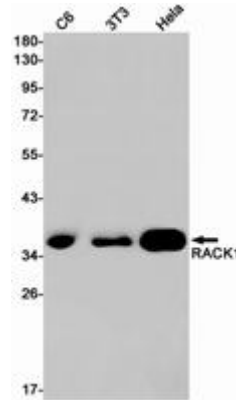
**Constituents:** PBS (without Mg<sup>2+</sup> and Ca<sup>2+</sup>), pH 7.3 containing 50% glycerol, 0.5% BSA and 0.02% sodium azide

**Research Areas:** Cell Biology

**Storage & Shipping:** Store at -20°C. Avoid repeated freezing and thawing



Immunohistochemistry analysis of paraffin-embedded Human breast cancer using RACK1 antibody. High-pressure and temperature Sodium Citrate pH 6.0 was used for antigen retrieval.



Western blot analysis of RACK1 in C6, 3T3, HeLa lysates using RACK1 antibody.