

RAD21 RABBIT MAB

Cat.#: N263520

Product Name: Anti-Rad21 Rabbit Monoclonal Antibody

Synonyms: RAD21; HR21; KIAA0078; NXP1; Double-strand-break repair protein rad21 homolog; hHR21; Nuclear matrix protein 1; NXP-1; SCC1 homolog

UNIPROT ID: O60216

Background: Rad21 is one of the major cohesin subunits that holds sister chromatids together until anaphase, when proteolytic cleavage by separase, a caspaselike enzyme, allows chromosomal separation. Rad21 interacts with Rec8 to form a cohesin complex that functions in sister chromatid alignment. Rad21 is also involved in the repair of double-strand breaks in DNA and is essential for mitotic growth. Rad21 undergoes a C-terminal cleavage induced by diverse stimuli right before apoptosis.

Immunogen: A synthetic peptide of human Rad21

Applications: WB,IHC-F,IHC-P,ICC/IF

Recommended Dilutions: WB: 1/500-1/1000 IHC: 1/50-1/100 IF: 1/50-1/200

Host Species: Rabbit

Clonality: Rabbit Monoclonal

Clone ID: R03-510

MW: Calculated MW: 72 kDa; Observed MW: 130 kDa

Isotype: IgG

Purification: Affinity Purified

Species Reactivity: Human,Hamster

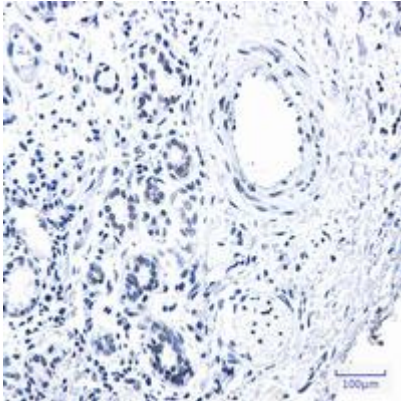
Conjugation: Unconjugated

Modification: Unmodified

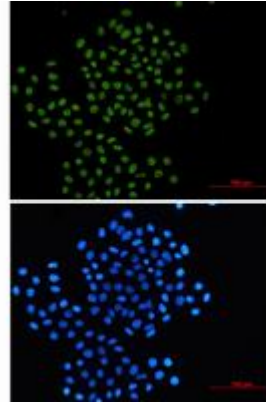
Constituents: PBS (without Mg²⁺ and Ca²⁺), pH 7.3 containing 50% glycerol, 0.5% BSA and 0.02% sodium azide

Research Areas: Cell Biology

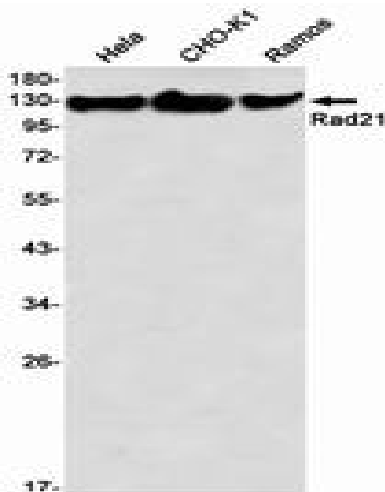
Storage & Shipping: Store at -20°C. Avoid repeated freezing and thawing



Immunohistochemistry analysis of paraffin-embedded Human lung cancer tissue using Rad21 antibody. High-pressure and temperature Sodium Citrate pH 6.0 was used for antigen retrieval.



Immunocytochemistry analysis of Rad21 (green) in Hela using Rad21 antibody, and DAPI (blue).



Western blot analysis of Rad21 in Hela, CHO-K1, Ramos lysates using Rad21 antibody.