

## RADIL RABBIT PAB

**Cat.#:** S218666

**Product Name:** Anti-RADIL Rabbit Polyclonal Antibody

**Synonyms:** RASIP2

**UNIPROT ID:** Q96JH8 (Gene Accession - BC004919 )

**Background:** Downstream effector of Rap required for cell adhesion and migration of neural crest precursors during development.

**Immunogen:** Fusion protein of human RADIL

**Applications:** ELISA, IHC

**Recommended Dilutions:** IHC: 40-200; ELISA: 5000-10000

**Host Species:** Rabbit

**Clonality:** Rabbit Polyclonal

**Isotype:** Immunogen-specific rabbit IgG

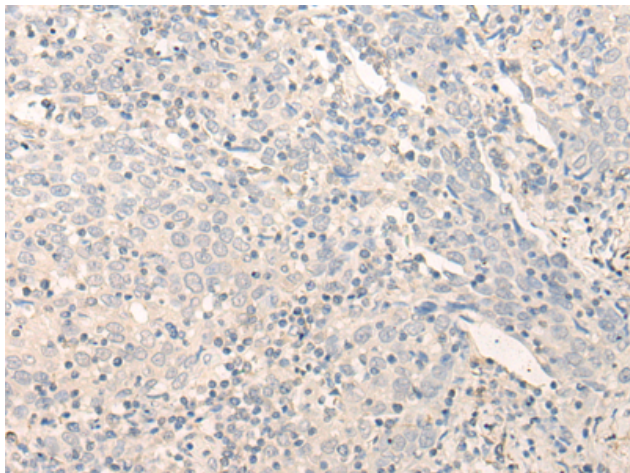
**Purification:** Antigen affinity purification

**Species Reactivity:** Human

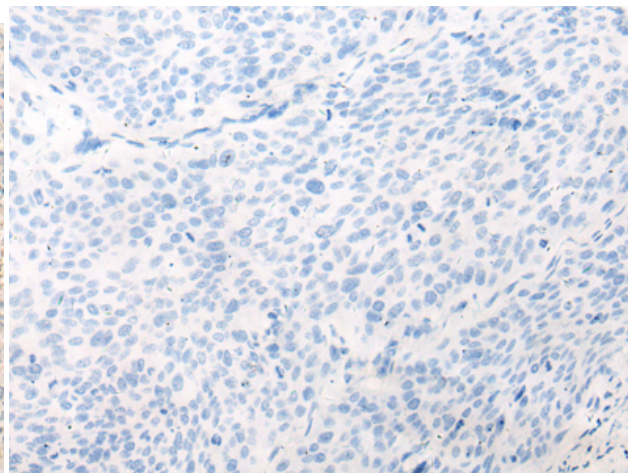
**Constituents:** PBS (without Mg<sup>2+</sup> and Ca<sup>2+</sup>), pH 7.4, 150 mM NaCl, 0.05% Sodium Azide and 40% glycerol

**Research Areas:** Signal Transduction

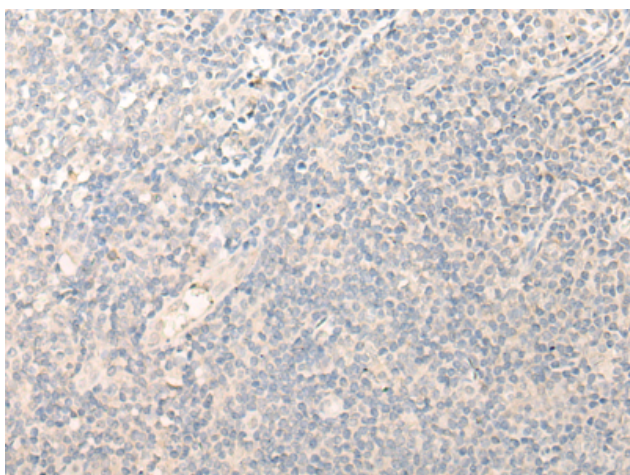
**Storage & Shipping:** Store at -20°C. Avoid repeated freezing and thawing



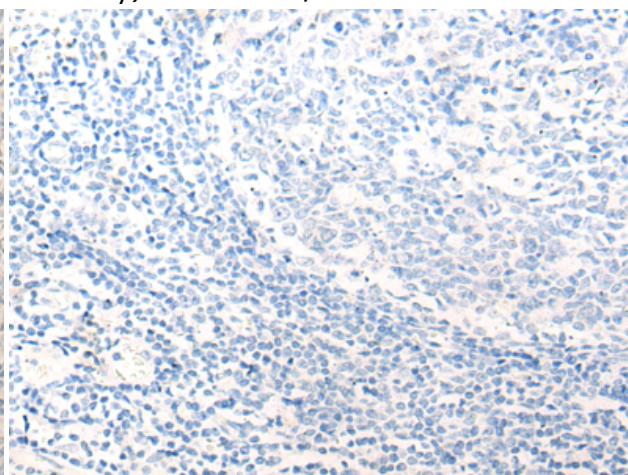
Immunohistochemistry analysis of paraffin embedded Human cervical cancer tissue using 218666(RADIL Antibody) at a dilution of 1/40(Cytoplasm).



In comparison with the IHC on the left, the same paraffin-embedded Human cervical cancer tissue is first treated with the fusion protein and then with 218666(Anti-RADIL Antibody) at dilution 1/40.



The image on the left is immunohistochemistry of paraffin-embedded Human tonsil tissue using 218666(Anti-RADIL Antibody) at a dilution of 1/40.



In comparison with the IHC on the left, the same paraffin-embedded Human tonsil tissue is first treated with fusion protein and then with D224897(Anti-RADIL Antibody) at dilution 1/40.