

RADIXIN RABBIT MAB

Cat.#: N262805

Product Name: Anti-Radixin Rabbit Monoclonal Antibody

Synonyms: RDX; Radixin

UNIPROT ID: P35241

Background: Probably plays a crucial role in the binding of the barbed end of actin filaments to the plasma membrane.

Immunogen: A synthetic peptide of human Radixin

Applications: WB,IHC-P,IP

Recommended Dilutions: WB: 1/500-1/1000 IHC: 1/50-1/100 IP: 1/20

Host Species: Rabbit

Clonality: Rabbit Monoclonal

Clone ID: R06-4J5

MW: Calculated MW: 69 kDa; Observed MW: 80 kDa

Isotype: IgG

Purification: Affinity Purified

Species Reactivity: Human,Mouse,Rat

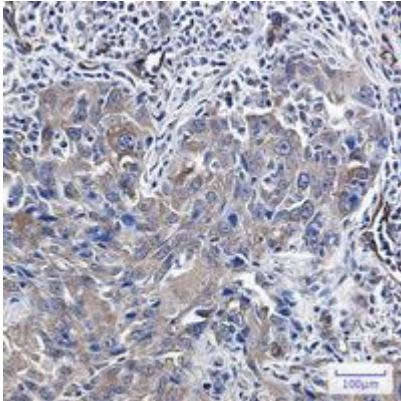
Conjugation: Unconjugated

Modification: Unmodified

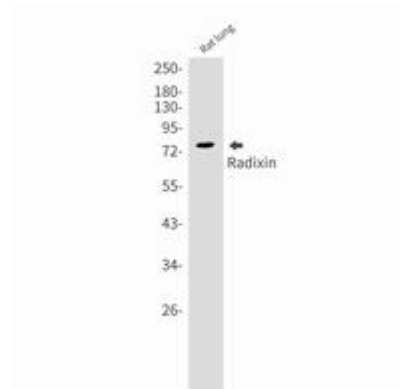
Constituents: PBS (without Mg²⁺ and Ca²⁺), pH 7.3 containing 50% glycerol, 0.5% BSA and 0.02% sodium azide

Research Areas: Signal Transduction

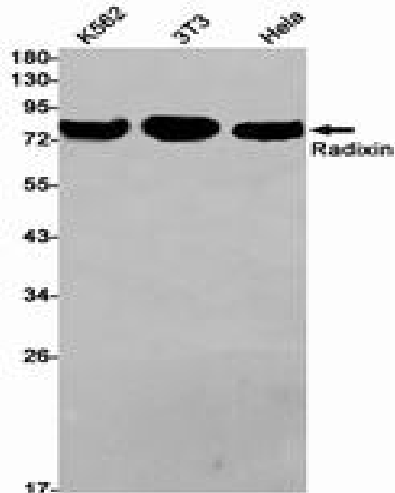
Storage & Shipping: Store at -20°C. Avoid repeated freezing and thawing



Immunohistochemistry analysis of paraffin-embedded Human lung cancer using Radixin antibody. High-pressure and temperature Sodium Citrate pH 6.0 was used for antigen retrieval.



Western blot analysis of Radixin in rat lung lysates using Radixin antibody.



Western blot analysis of Radixin in K562, 3T3, HeLa lysates using Radixin antibody.