

## RADIXIN RABBIT PAB

**Cat.#:** N225680

**Product Name:** Anti-Radixin Rabbit pAb

**Synonyms:** RDX; Radixin

**UNIPROT ID:** P35241

**Background:** Probably plays a crucial role in the binding of the barbed end of actin filaments to the plasma membrane.

**Immunogen:** A synthesized peptide derived from human Radixin

**Applications:** WB,IHC-P,ICC/IF,IP,FC

**Recommended Dilutions:** WB: 1/500-1/1000 IHC: 1/50-1/100 IF: 1/50-1/200 IP: 1/20 FC: 1/50-1/100

**Host Species:** Rabbit

**Clonality:** Rabbit Polyclonal

**Clone ID:** -

**MW:** Calculated MW: 69 kDa; Observed MW: 80 kDa

**Isotype:** IgG

**Purification:** Affinity Chromatography

**Species Reactivity:** Human,Mouse,Rat

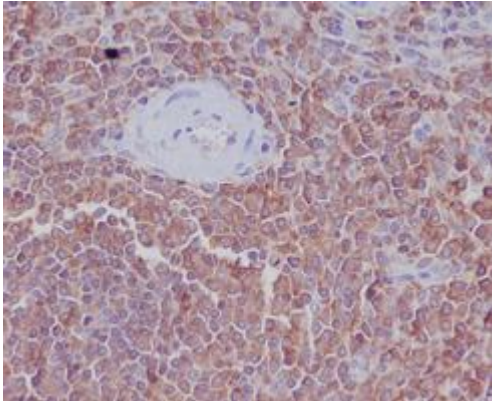
**Conjugation:** Unconjugated

**Modification:** Unmodified

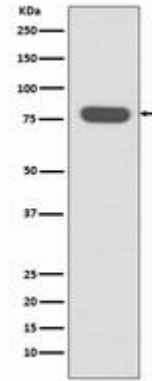
**Constituents:** PBS (without Mg<sup>2+</sup> and Ca<sup>2+</sup>), pH 7.3 containing 50% glycerol, 0.5% BSA and 0.02% sodium azide

**Research Areas:** Signal Transduction

**Storage & Shipping:** Store at -20°C. Avoid repeated freezing and thawing



Immunohistochemistry analysis of paraffin-embedded Human spleen using Radixin antibody. High-pressure and temperature Sodium Citrate pH 6.0 was used for antigen retrieval.



Western blot analysis of Radixin in HeLa lysates using Radixin antibody.