

RAF1 RABBIT PAB

Cat.#: S216448

Product Name: Anti-RAF1 Rabbit Polyclonal Antibody

Synonyms: NS5; CRAF; Raf-1; c-Raf; CMD1NN

UNIPROT ID: P04049 (Gene Accession - BC018119)

Background: This gene is the cellular homolog of viral raf gene (*v-raf*). The encoded protein is a MAP kinase kinase kinase (MAP3K), which functions downstream of the Ras family of membrane associated GTPases to which it binds directly. Once activated, the cellular RAF1 protein can phosphorylate to activate the dual specificity protein kinases MEK1 and MEK2, which in turn phosphorylate to activate the serine/threonine specific protein kinases, ERK1 and ERK2. Activated ERKs are pleiotropic effectors of cell physiology and play an important role in the control of gene expression involved in the cell division cycle, apoptosis, cell differentiation and cell migration. Mutations in this gene are associated with Noonan syndrome 5 and LEOPARD syndrome 2.

Immunogen: Fusion protein of human RAF1

Applications: ELISA, WB, IHC

Recommended Dilutions: IHC: 50-200;WB: 500-2000;ELISA: 5000-10000

Host Species: Rabbit

Clonality: Rabbit Polyclonal

Isotype: Immunogen-specific rabbit IgG

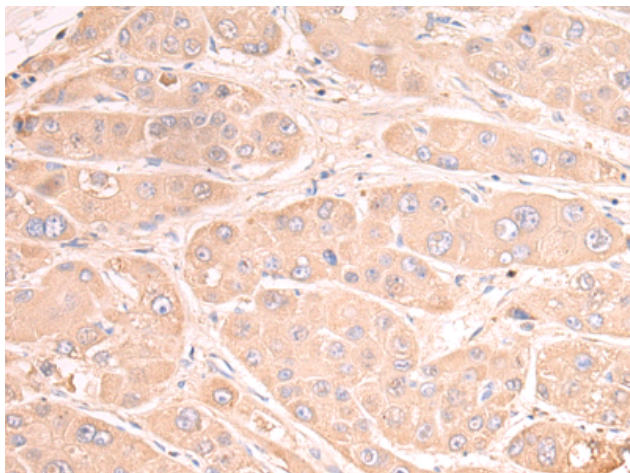
Purification: Antigen affinity purification

Species Reactivity: Human, Mouse, Rat

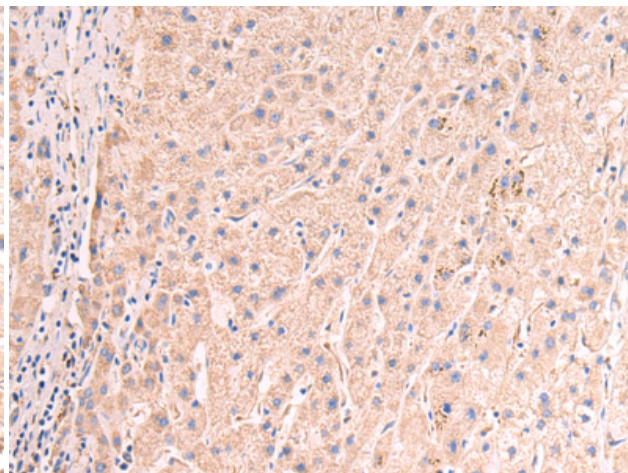
Constituents: PBS (without Mg²⁺ and Ca²⁺), pH 7.4, 150 mM NaCl, 0.05% Sodium Azide and 40% glycerol

Research Areas: Signal Transduction, Cancer, Metabolism

Storage & Shipping: Store at -20°C. Avoid repeated freezing and thawing

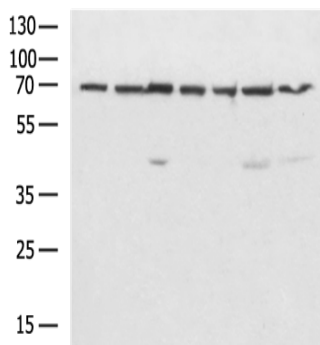


Immunohistochemistry analysis of paraffin-embedded Human liver cancer tissue using 216448(RAF1 Antibody) at a dilution of 1/40(Cytoplasm).



Immunohistochemistry analysis of paraffin-embedded Human prostate cancer tissue using 216448(Anti-RAF1 Antibody) at a dilution of 1/40.

kDa 1 2 3 4 5 6 7



Gel: 8%SDS-PAGE, Lysate: 40 μ g;
Lane 1-7: HepG2, Mouse fetal muscle tissue,
MCF7, NIH/3T3, Ramos, Hela, K562 cell lysates;
Primary antibody: 216448(RAF1 Antibody) at
dilution 1/600;
Secondary antibody: HRP-conjugated Goat
anti rabbit IgG at 1/5000 dilution;
Exposure time: 10 seconds