

RALB RABBIT MAB

Cat.#: N262810

Product Name: Anti-RALB Rabbit Monoclonal Antibody

Synonyms: Ras-related protein Ral-B

UNIPROT ID: P11234

Background: Multifunctional GTPase involved in a variety of cellular processes including gene expression, cell migration, cell proliferation, oncogenic transformation and membrane trafficking. Accomplishes its multiple functions by interacting with distinct downstream effectors. Acts as a GTP sensor for GTP-dependent exocytosis of dense core vesicles. Required both to stabilize the assembly of the exocyst complex and to localize functional exocyst complexes to the leading edge of migrating cells. Required for suppression of apoptosis (PubMed:17875936). In late stages of cytokinesis, upon completion of the bridge formation between dividing cells, mediates exocyst recruitment to the midbody to drive abscission (PubMed:18756269).

Immunogen: A synthetic peptide of human RALB

Applications: WB,IP

Recommended Dilutions: WB: 1/500-1/1000 IP: 1/20

Host Species: Rabbit

Clonality: Rabbit Monoclonal

Clone ID: R08-6E3

MW: Calculated MW: 23 kDa; Observed MW: 23 kDa

Isotype: IgG

Purification: Affinity Purified

Species Reactivity: Human,Mouse

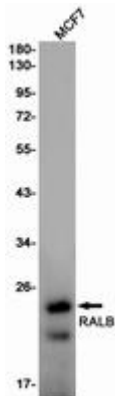
Conjugation: Unconjugated

Modification: Unmodified

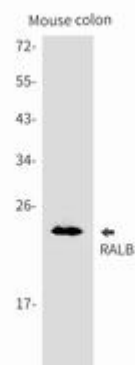
Constituents: PBS (without Mg²⁺ and Ca²⁺), pH 7.3 containing 50% glycerol, 0.5% BSA and 0.02% sodium azide

Research Areas: Signal Transduction

Storage & Shipping: Store at -20°C. Avoid repeated freezing and thawing



Western blot analysis of RALB in MCF-7 lysates using RALB antibody.



Western blot analysis of RALB in mouse colon lysates using RALB antibody.