

## RAN RABBIT MAB

**Cat.#:** N262812

**Product Name:** Anti-Ran Rabbit Monoclonal Antibody

**Synonyms:** RAN; ARA24; OK/SW-cl.81; GTP-binding nuclear protein Ran; Androgen receptor-associated protein 24; GTPase Ran; Ras-like protein TC4; Ras-related nuclear protein

**UNIPROT ID:** P62826

**Background:** GTP-binding protein involved in nucleocytoplasmic transport. Required for the import of protein into the nucleus and also for RNA export. Involved in chromatin condensation and control of cell cycle (By similarity).

**Immunogen:** A synthetic peptide of human Ran

**Applications:** WB, ICC/IF, IP

**Recommended Dilutions:** WB: 1/500-1/1000 IF: 1/50-1/200 IP: 1/20

**Host Species:** Rabbit

**Clonality:** Rabbit Monoclonal

**Clone ID:** R01-7J8

**MW:** Calculated MW: 24 kDa; Observed MW: 24 kDa

**Isotype:** IgG

**Purification:** Affinity Purified

**Species Reactivity:** Human, Mouse, Monkey

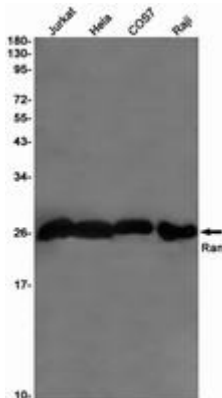
**Conjugation:** Unconjugated

**Modification:** Unmodified

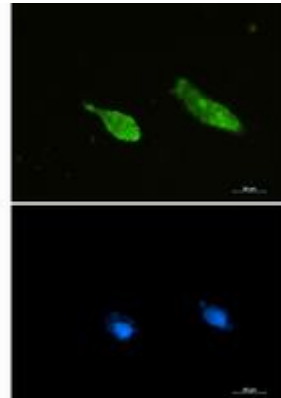
**Constituents:** PBS (without Mg<sup>2+</sup> and Ca<sup>2+</sup>), pH 7.3 containing 50% glycerol, 0.5% BSA and 0.02% sodium azide

**Research Areas:** Cell Biology

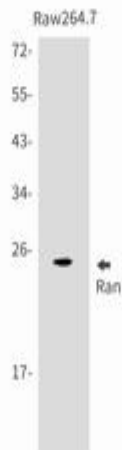
**Storage & Shipping:** Store at -20°C. Avoid repeated freezing and thawing



Western blot analysis of Ran in Jurkat, HeLa, COS7, Raji lysates using Ran antibody



Immunocytochemistry analysis of Ran (green) in U87-MG using Ran antibody, and DAPI (blue).



Western blot analysis of Ran in Raw264.7 lysates using Ran antibody.