

RAP1 RABBIT MAB

Cat.#: N262813

Product Name: Anti-RAP1 Rabbit Monoclonal Antibody

Synonyms: Ras-related protein Rap-1b; K-REV; RAL1B

UNIPROT ID: P61224

Background: GTP-binding protein that possesses intrinsic GTPase activity. Contributes to the polarizing activity of KRIT1 and CDH5 in the establishment and maintenance of correct endothelial cell polarity and vascular lumen. Required for the localization of phosphorylated PRKCZ, PARD3 and TIAM1 to the cell junction. Plays a role in the establishment of basal endothelial barrier function.

Immunogen: A synthetic peptide of human RAPIA/B

Applications: WB,IP

Recommended Dilutions: WB: 1/500-1/1000 IP: 1/20

Host Species: Rabbit

Clonality: Rabbit Monoclonal

Clone ID: R03-7H8

MW: Calculated MW: 21 kDa; Observed MW: 21 kDa

Isotype: IgG

Purification: Affinity Purified

Species Reactivity: Human,Mouse,Rat

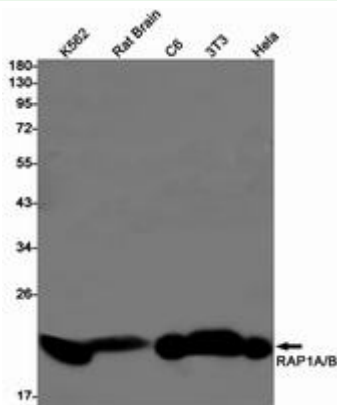
Conjugation: Unconjugated

Modification: Unmodified

Constituents: PBS (without Mg²⁺ and Ca²⁺), pH 7.3 containing 50% glycerol, 0.5% BSA and 0.02% sodium azide

Research Areas: Signal Transduction

Storage & Shipping: Store at -20°C. Avoid repeated freezing and thawing



Western blot analysis of RAP1A/B in K562, rat Brain, C6, 3T3, HeLa lysates using RAP1 antibody.