

## RAP1A RABBIT PAB

**Cat.#:** S216352

**Product Name:** Anti-RAP1A Rabbit Polyclonal Antibody

**Synonyms:** RAPI; C21KG; G-22K; KREVI; KREV-1; SMGP21

**UNIPROT ID:** P62834 (Gene Accession - BC014086 )

**Background:** This gene encodes a member of the Ras family of small GTPases. The encoded protein undergoes a change in conformational state and activity, depending on whether it is bound to GTP or GDP. This protein is activated by several types of guanine nucleotide exchange factors (GEFs), and inactivated by two groups of GTPase-activating proteins (GAPs). The activation status of the encoded protein is therefore affected by the balance of intracellular levels of GEFs and GAPs.

**Immunogen:** Full length fusion protein

**Applications:** ELISA, WB, IHC

**Recommended Dilutions:** IHC: 50-200;WB: 500-2000;ELISA: 2000-5000

**Host Species:** Rabbit

**Clonality:** Rabbit Polyclonal

**Isotype:** Immunogen-specific rabbit IgG

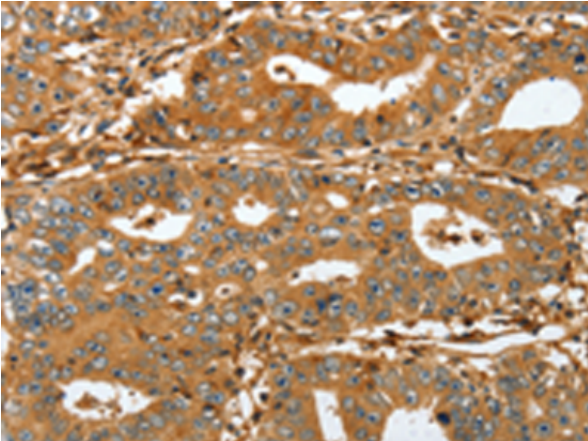
**Purification:** Antigen affinity purification

**Species Reactivity:** Human, Mouse, Rat

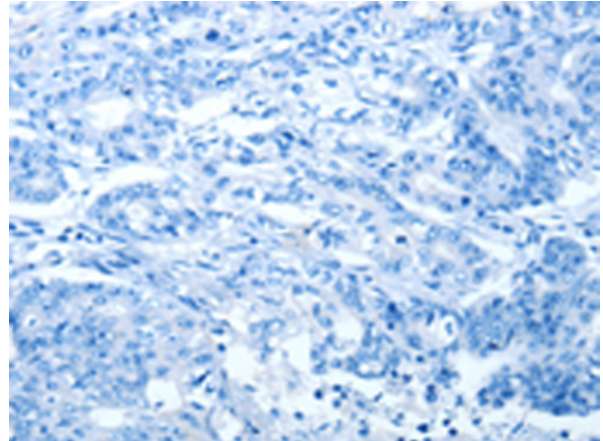
**Constituents:** PBS (without Mg<sup>2+</sup> and Ca<sup>2+</sup>), pH 7.4, 150 mM NaCl, 0.05% Sodium Azide and 40% glycerol

**Research Areas:** Signal Transduction

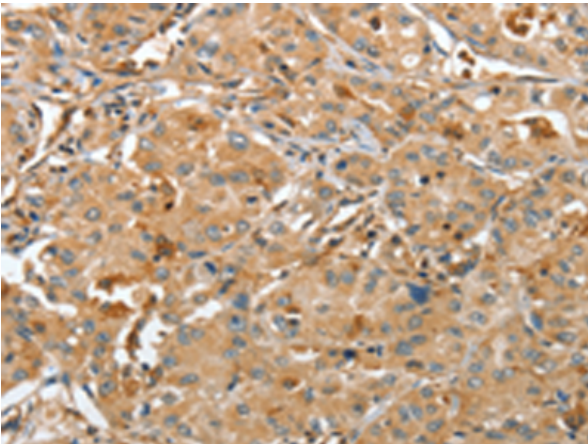
**Storage & Shipping:** Store at -20°C. Avoid repeated freezing and thawing



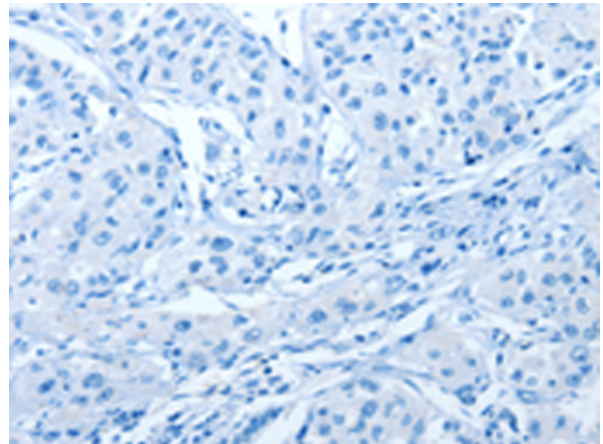
Immunohistochemistry analysis of paraffin embedded Human gastric cancer tissue using 216352(RAP1A Antibody) at a dilution of 1/45(Cytoplasm).



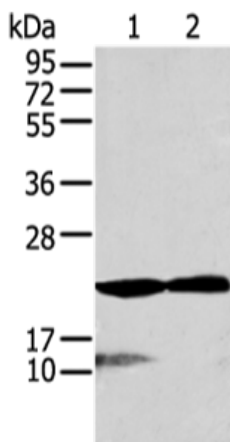
In comparison with the IHC on the left, the same paraffin-embedded Human gastric cancer tissue is first treated with the fusion protein and then with 216352(Anti-RAP1A Antibody) at dilution 1/45.



The image on the left is immunohistochemistry of paraffin-embedded Human lung cancer tissue using 216352(Anti-RAP1A Antibody) at a dilution of 1/45.



In comparison with the IHC on the left, the same paraffin-embedded Human lung cancer tissue is first treated with fusion protein and then with D220263(Anti-RAP1A Antibody) at dilution 1/45.



Gel: 12%SDS-PAGE, Lysate: 40 µg;  
 Lane 1-2: Mouse brain tissue and A431 cell;  
 Primary antibody: 216352(RAP1A Antibody) at dilution 1/200;  
 Secondary antibody: Goat anti rabbit IgG at 1/8000 dilution;  
 Exposure time: 10 seconds



# Product Description

Pioneering GTPase and Oncogene Product Development since 2010

---