

RASA2 RABBIT PAB

Cat.#: S214618

Product Name: Anti-RASA2 Rabbit Polyclonal Antibody

Synonyms: GAP1M

UNIPROT ID: Q15283 (Gene Accession - NP_006497)

Background: The protein encoded by this gene is member of the GAP1 family of GTPase-activating proteins. The gene product stimulates the GTPase activity of normal RAS p21 but not its oncogenic counterpart. Acting as a suppressor of RAS function, the protein enhances the weak intrinsic GTPase activity of RAS proteins resulting in the inactive GDP-bound form of RAS, thereby allowing control of cellular proliferation and differentiation. This particular family member has a perinuclear localization and is an inositol 1,3,4,5-tetrakisphosphate-binding protein; a compound suggested to function as a second messenger.

Immunogen: Synthetic peptide of human RASA2

Applications: ELISA, IHC

Recommended Dilutions: IHC: 50-200; ELISA: 2000-5000

Host Species: Rabbit

Clonality: Rabbit Polyclonal

Isotype: Immunogen-specific rabbit IgG

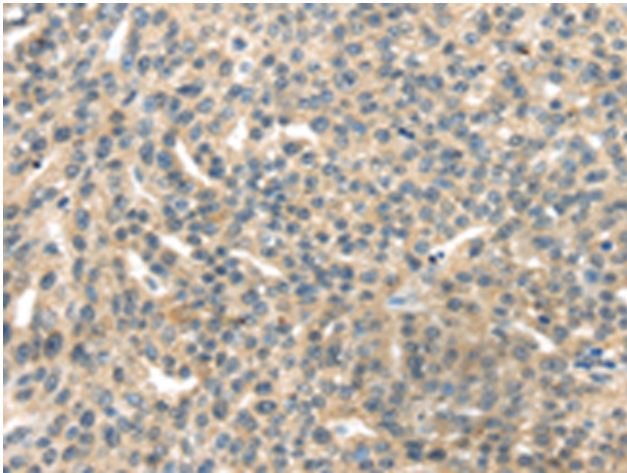
Purification: Antigen affinity purification

Species Reactivity: Human, Mouse, Rat

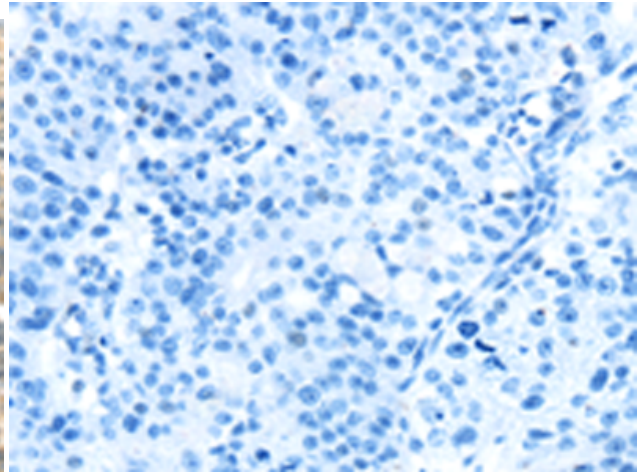
Constituents: PBS (without Mg²⁺ and Ca²⁺), pH 7.4, 150 mM NaCl, 0.05% Sodium Azide and 40% glycerol

Research Areas: Signal Transduction

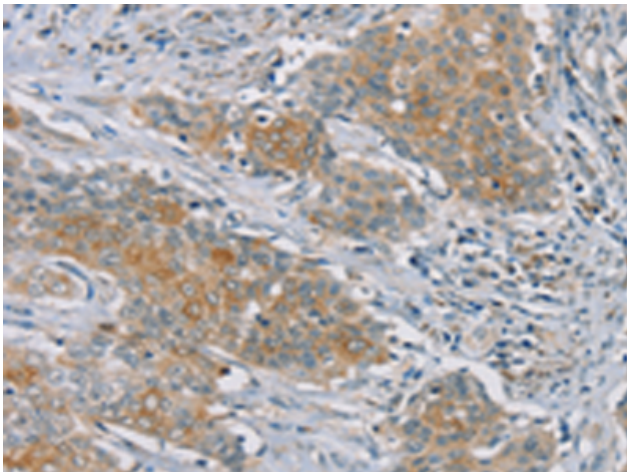
Storage & Shipping: Store at -20°C. Avoid repeated freezing and thawing



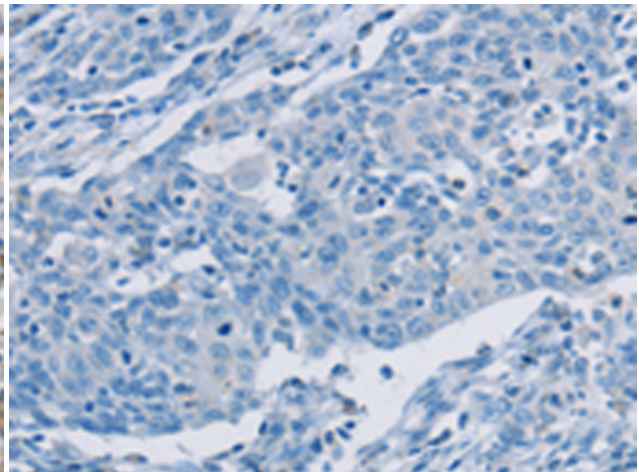
Immunohistochemistry analysis of paraffin embedded Human esophagus cancer tissue using 214618(RASA2 Antibody) at a dilution of 1/45(Cytoplasm).



In comparison with the IHC on the left, the same paraffin-embedded Human esophagus cancer tissue is first treated with the synthetic peptide and then with 214618(Anti-RASA2 Antibody) at dilution 1/45.



The image on the left is immunohistochemistry of paraffin-embedded Human ovarian cancer tissue using 214618(Anti-RASA2 Antibody) at a dilution of 1/45.



In comparison with the IHC on the left, the same paraffin-embedded Human ovarian cancer tissue is first treated with synthetic peptide and then with D162111(Anti-RASA2 Antibody) at dilution 1/45.