

## RASA4 RABBIT PAB

**Cat.#:** S217738

**Product Name:** Anti-RASA4 Rabbit Polyclonal Antibody

**Synonyms:** GAPL; CAPRI

**UNIPROT ID:** O43374 (Gene Accession - BC113663 )

**Background:** This gene encodes a member of the GAP1 family of GTPase-activating proteins that suppresses the Ras/mitogen-activated protein kinase pathway in response to  $Ca^{2+}$ . Stimuli that increase intracellular  $Ca^{2+}$  levels result in the translocation of this protein to the plasma membrane, where it activates Ras GTPase activity. Consequently, Ras is converted from the active GTP-bound state to the inactive GDP-bound state and no longer activates downstream pathways that regulate gene expression, cell growth, and differentiation. Multiple transcript variants encoding different isoforms have been found for this gene. [

**Immunogen:** Fusion protein of human RASA4

**Applications:** ELISA, IHC

**Recommended Dilutions:** IHC: Oct-50; ELISA: 1000-2000

**Host Species:** Rabbit

**Clonality:** Rabbit Polyclonal

**Isotype:** Immunogen-specific rabbit IgG

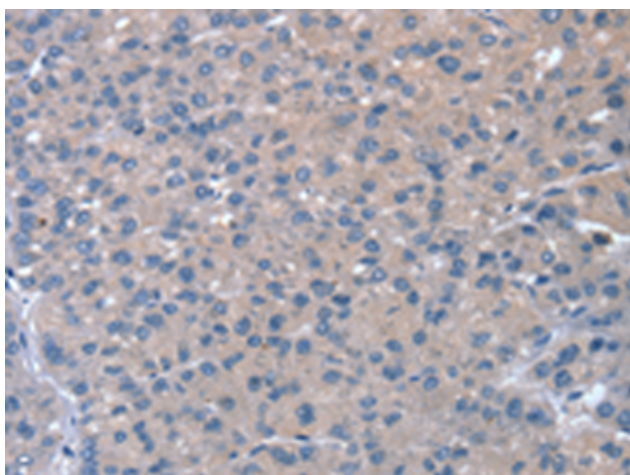
**Purification:** Antigen affinity purification

**Species Reactivity:** Human, Mouse

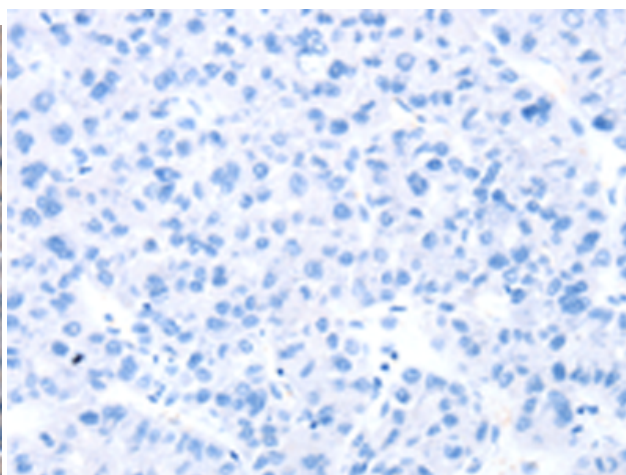
**Constituents:** PBS (without  $Mg^{2+}$  and  $Ca^{2+}$ ), pH 7.4, 150 mM NaCl, 0.05% Sodium Azide and 40% glycerol

**Research Areas:** Signal Transduction

**Storage & Shipping:** Store at  $-20^{\circ}C$ . Avoid repeated freezing and thawing



Immunohistochemistry analysis of paraffin embedded Human liver cancer tissue using 217738(RASA4 Antibody) at a dilution of 1/20(Cytoplasm).



In comparison with the IHC on the left, the same paraffin-embedded Human liver cancer tissue is first treated with the fusion protein and then with 217738(Anti-RASA4 Antibody) at dilution 1/20.