

RASSF8 RABBIT PAB

Cat.#: N225165

Product Name: Anti-RASSF8 Rabbit pAb

Synonyms: RASSF8; C12orf2; Ras association domain-containing protein 8; Carcinoma-associated protein HOJ-1

UNIPROT ID: Q8NHQ8

Background: This gene encodes a member of the Ras-association domain family (RASSF) of tumor suppressor proteins. This gene is essential for maintaining adherens junction function in epithelial cells and has a role in epithelial cell migration. It is a lung tumor suppressor gene candidate.

Immunogen: Synthesized peptide derived from RASSF8 . at AA range: 60-140

Applications: WB,ELISA

Recommended Dilutions: WB: 1/500-1/1000 ELISA: 1/10000

Host Species: Rabbit

Clonality: Rabbit Polyclonal

Clone ID: -

MW: Calculated MW: 48 kDa; Observed MW: 48 kDa

Isotype: IgG

Purification: Affinity Purified

Species Reactivity: Human,Rat

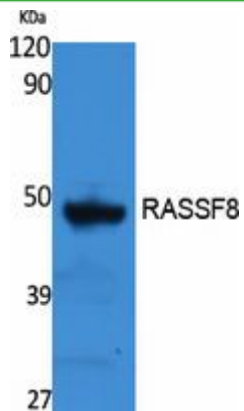
Conjugation: Unconjugated

Modification: Unmodified

Constituents: PBS (without Mg²⁺ and Ca²⁺), pH 7.3 containing 50% glycerol, 0.5% BSA and 0.02% sodium azide

Research Areas: Signal Transduction

Storage & Shipping: Store at -20°C. Avoid repeated freezing and thawing



Western blot analysis of RASSF8 in rat stomach lysates using RASSF8 antibody.