

RAVER2 RABBIT MAB

Cat.#: N262819

Product Name: Anti-RAVER2 Rabbit Monoclonal Antibody

Synonyms: Protein raver-2

UNIPROT ID: Q9HCJ3

Background: May bind single-stranded nucleic acids.

Immunogen: Recombinant protein of human RAVER2

Applications: WB,IHC-F,IHC-P,ICC/IF,IP

Recommended Dilutions: WB: 1/500-1/1000 IHC: 1/50-1/100 IF: 1/50-1/200 IP: 1/20

Host Species: Rabbit

Clonality: Rabbit Monoclonal

Clone ID: R09-6H8

MW: Calculated MW: 74 kDa; Observed MW: 74 kDa

Isotype: IgG

Purification: Affinity Purified

Species Reactivity: Human

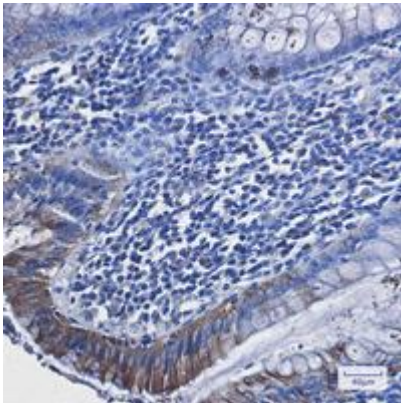
Conjugation: Unconjugated

Modification: Unmodified

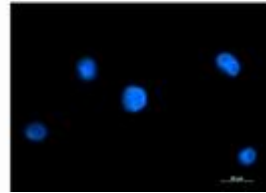
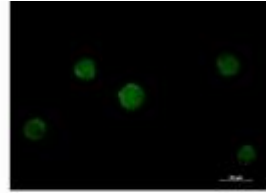
Constituents: PBS (without Mg²⁺ and Ca²⁺), pH 7.3 containing 50% glycerol, 0.5% BSA and 0.02% sodium azide

Research Areas: Epigenetics and Nuclear Signaling

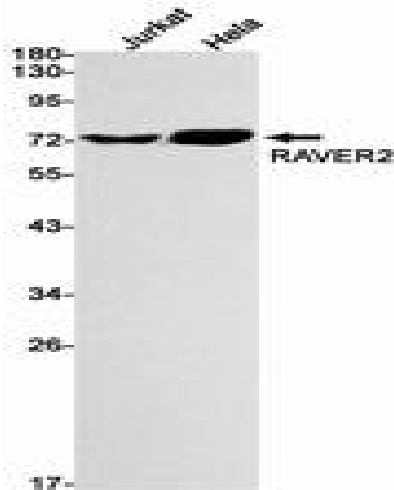
Storage & Shipping: Store at -20°C. Avoid repeated freezing and thawing



Immunohistochemistry analysis of paraffin-embedded Human colon cancer tissue using RAVER2 antibody. High-pressure and temperature Sodium Citrate pH 6.0 was used for antigen retrieval.



Immunocytochemistry analysis of RAVER2 (green) in K562 using RAVER2 antibody, and DAPI (blue).



Western blot analysis of RAVER2 in Jurkat, HeLa lysates using RAVER2 antibody.