

RBBP8 RABBIT PAB

Cat.#: S217312

Product Name: Anti-RBBP8 Rabbit Polyclonal Antibody

Synonyms: RIM; COM1; CTIP; JWDS; SAE2; SCKL2

UNIPROT ID: Q99708 (Gene Accession - BC030590)

Background: The protein encoded by this gene is a ubiquitously expressed nuclear protein. It is found among several proteins that bind directly to retinoblastoma protein, which regulates cell proliferation. This protein complexes with transcriptional co-repressor CTBP. It is also associated with BRCA1 and is thought to modulate the functions of BRCA1 in transcriptional regulation, DNA repair, and/or cell cycle checkpoint control. It is suggested that this gene may itself be a tumor suppressor acting in the same pathway as BRCA1.

Immunogen: Fusion protein of human RBBP8

Applications: ELISA, WB, IHC

Recommended Dilutions: IHC: 100-300;WB: 200-1000;ELISA: 5000-10000

Host Species: Rabbit

Clonality: Rabbit Polyclonal

Isotype: Immunogen-specific rabbit IgG

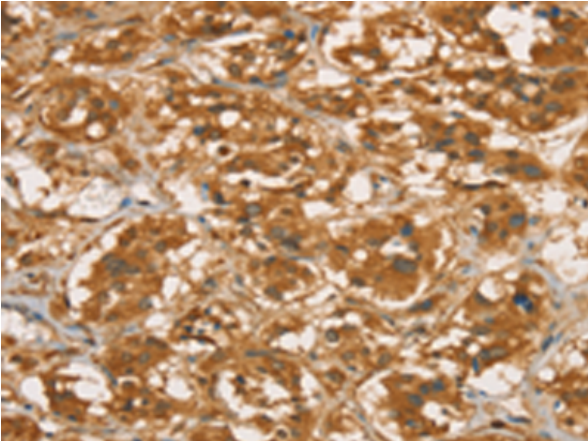
Purification: Antigen affinity purification

Species Reactivity: Human, Mouse, Rat

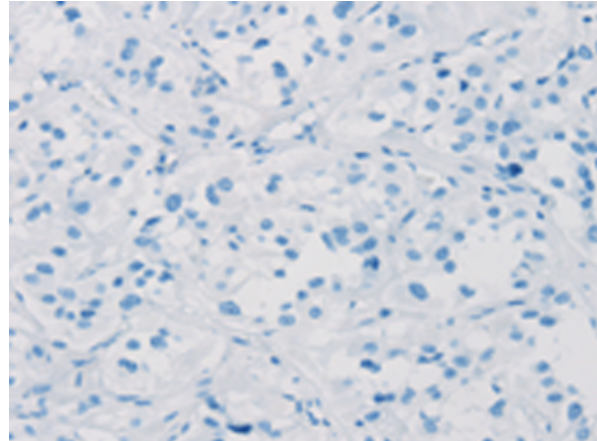
Constituents: PBS (without Mg²⁺ and Ca²⁺), pH 7.4, 150 mM NaCl, 0.05% Sodium Azide and 40% glycerol

Research Areas: Epigenetics and Nuclear Signaling, Cancer

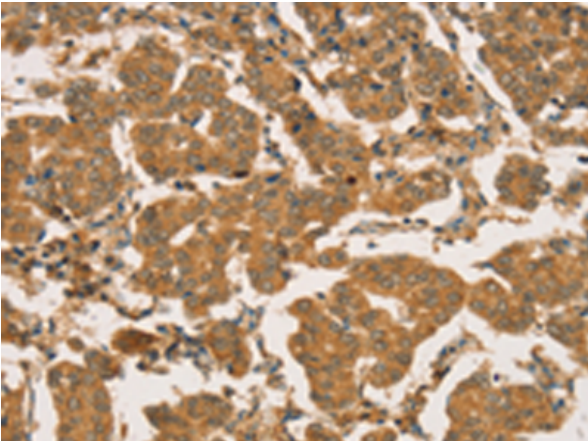
Storage & Shipping: Store at -20°C. Avoid repeated freezing and thawing



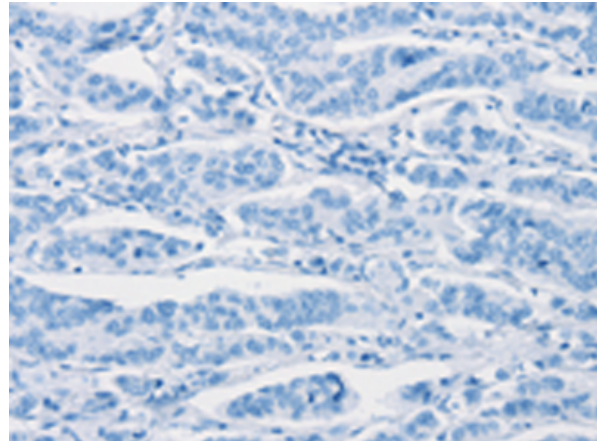
Immunohistochemistry analysis of paraffin embedded Human thyroid cancer tissue using 217312(RBBP8 Antibody) at a dilution of 1/45(cytoplasm or nucleus).



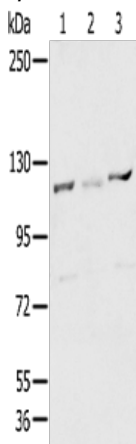
In comparison with the IHC on the left, the same paraffin-embedded Human thyroid cancer tissue is first treated with the fusion protein and then with 217312(Anti-RBBP8 Antibody) at dilution 1/45.



The image on the left is immunohistochemistry of paraffin-embedded Human breast cancer tissue using 217312(Anti-RBBP8 Antibody) at a dilution of 1/45.



In comparison with the IHC on the left, the same paraffin-embedded Human breast cancer tissue is first treated with fusion protein and then with D222163(Anti-RBBP8 Antibody) at dilution 1/45.



Gel: 6%SDS-PAGE, Lysate: 40 µg;
Lane 1-3: HepG2, Hela and 231 cell;
Primary antibody: 217312(RBBP8 Antibody) at dilution 1/300;
Secondary antibody: Goat anti rabbit IgG at 1/8000 dilution;
Exposure time: 2 seconds



Product Description

Pioneering GTPase and Oncogene Product Development since 2010
