

RBM26 RABBIT PAB

Cat.#: S222164

Product Name: Anti-RBM26 Rabbit Polyclonal Antibody

Synonyms: ARRS2; SE70-2; ZC3H17; PRO1777; C13orf10; PPP1R132

UNIPROT ID: Q5T8P6 (Gene Accession - NP_001273560)

Background: RBM26 (RNA binding motif protein 26) bears two RNA recognition motif (RRM) domains and a C3H1-type zinc finger. The function of RBM26 has not been characterized.

Immunogen: Synthetic peptide of human RBM26

Applications: ELISA, IHC

Recommended Dilutions: IHC: 30-150; ELISA: 5000-10000

Host Species: Rabbit

Clonality: Rabbit Polyclonal

Isotype: Immunogen-specific rabbit IgG

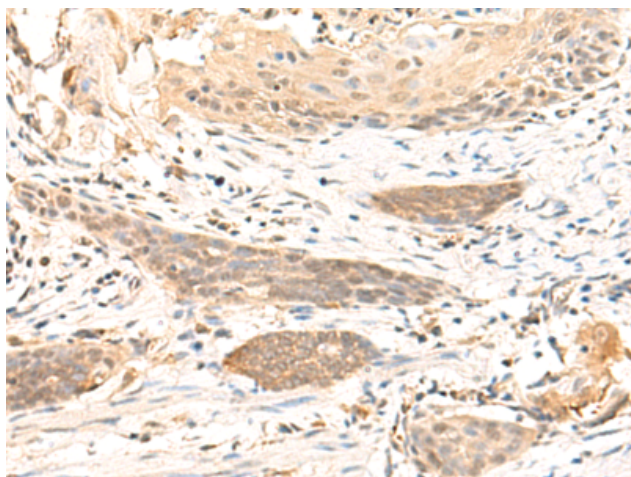
Purification: Antigen affinity purification

Species Reactivity: Human, Mouse

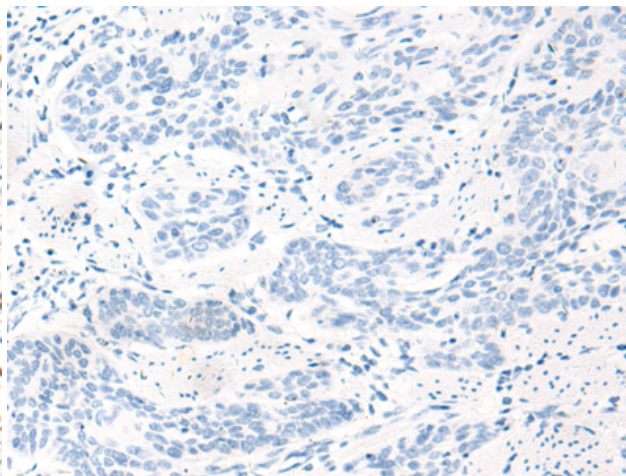
Constituents: PBS (without Mg²⁺ and Ca²⁺), pH 7.4, 150 mM NaCl, 0.05% Sodium Azide and 40% glycerol

Research Areas: Epigenetics and Nuclear Signaling, Cell Biology

Storage & Shipping: Store at -20°C. Avoid repeated freezing and thawing



Immunohistochemistry analysis of paraffin embedded Human esophagus cancer tissue using 222164(RBM26 Antibody) at a dilution of 1/35(Nucleus).



In comparison with the IHC on the left, the same paraffin-embedded Human esophagus cancer tissue is first treated with the synthetic peptide and then with 222164(Anti-RBM26 Antibody) at dilution 1/35.