

RBM3 RABBIT MAB

Cat.#: N263528

Product Name: Anti-RBM3 Rabbit Monoclonal Antibody

Synonyms: RNPL; IS1-RNPL

UNIPROT ID: P98179

Background: Cold-inducible mRNA binding protein that enhances global protein synthesis at both physiological and mild hypothermic temperatures.

Immunogen: A synthetic peptide of human RBM3

Applications: WB, ICC/IF

Recommended Dilutions: WB: 1/500-1/1000 IF: 1/50-1/200

Host Species: Rabbit

Clonality: Rabbit Monoclonal

Clone ID: R02-0C1

MW: Calculated MW: 17 kDa; Observed MW: 17 kDa

Isotype: IgG

Purification: Affinity Purified

Species Reactivity: Human, Mouse

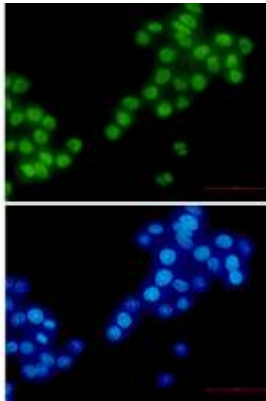
Conjugation: Unconjugated

Modification: Unmodified

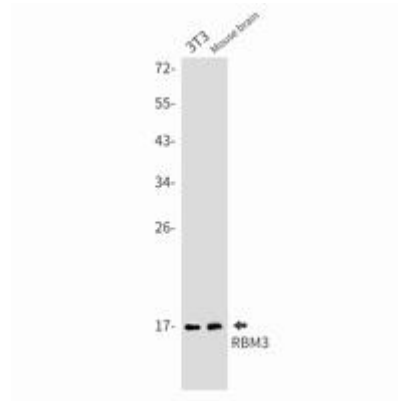
Constituents: PBS (without Mg²⁺ and Ca²⁺), pH 7.3 containing 50% glycerol, 0.5% BSA and 0.02% sodium azide

Research Areas: Epigenetics and Nuclear Signaling

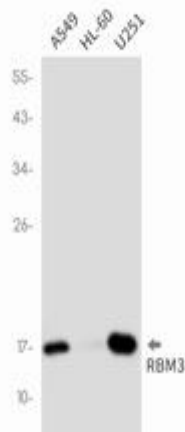
Storage & Shipping: Store at -20°C. Avoid repeated freezing and thawing



Immunocytochemistry analysis of RBM3 (green) in HeLa using RBM3 antibody, and DAPI (blue)



Western blot analysis of RBM3 in 3T3, mouse brain lysates using RBM3 antibody.



Western blot analysis of RBM3 in A549, HL-60, U251 lysates using RBM3 antibody.