

RBM38 RABBIT PAB

Cat.#: S220849

Product Name: Anti-RBM38 Rabbit Polyclonal Antibody

Synonyms: RNPC1; SEB4B; SEB4D; HSRNASEB; dJ800J21.2

UNIPROT ID: Q9H0Z9 (Gene Accession - NP_059965)

Background: RBM38 is a cell cycle protein found in the cytosol and the nucleus that exists as two alternatively spliced isoforms, 1 (RNPC1a) and 2 (RNPC1b), of 239 and 121 amino acids, respectively. Independent of p53 expression, RBM38 isoform 1 induces cell cycle arrest in G1 phase through maintaining transcript stability at the 3'-UTR of p21, a regulator of cell cycle progression at S phase. RBM38 is also an mRNA splicing factor that regulates the expression of FGFR2. RBM38 contains one RRM (RNA recognition motif) domain.

Immunogen: Synthetic peptide of human RBM38

Applications: ELISA, IHC

Recommended Dilutions: IHC: 50-300; ELISA: 2000-10000

Host Species: Rabbit

Clonality: Rabbit Polyclonal

Isotype: Immunogen-specific rabbit IgG

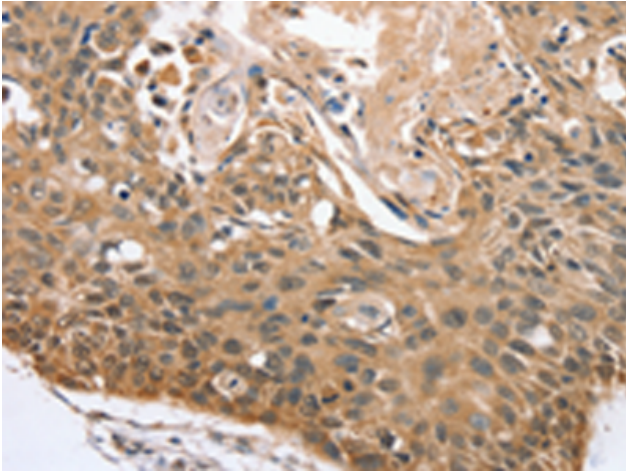
Purification: Antigen affinity purification

Species Reactivity: Human, Mouse

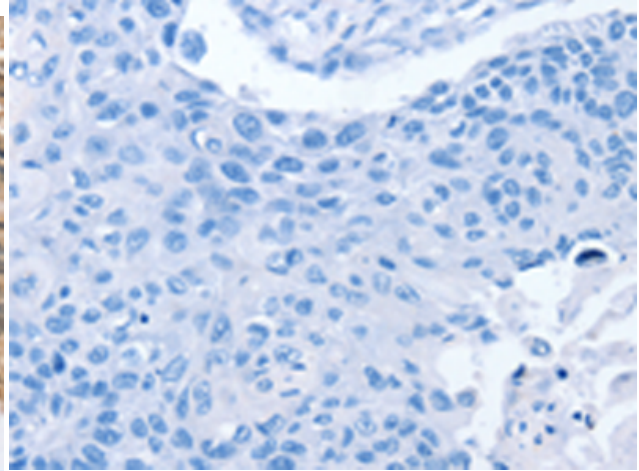
Constituents: PBS (without Mg²⁺ and Ca²⁺), pH 7.4, 150 mM NaCl, 0.05% Sodium Azide and 40% glycerol

Research Areas: Epigenetics and Nuclear Signaling, Cancer, Stem Cells, Developmental Biology

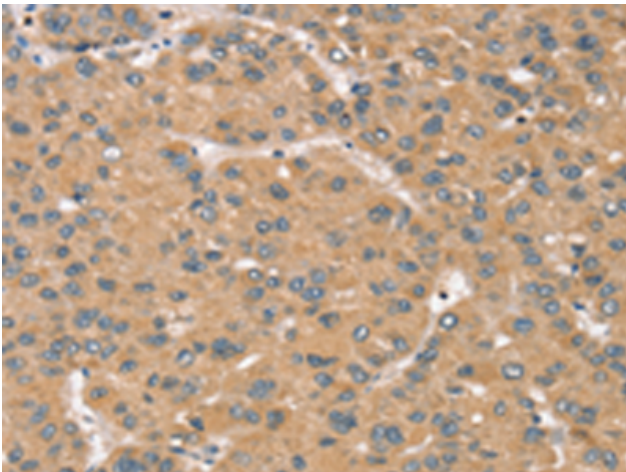
Storage & Shipping: Store at -20°C. Avoid repeated freezing and thawing



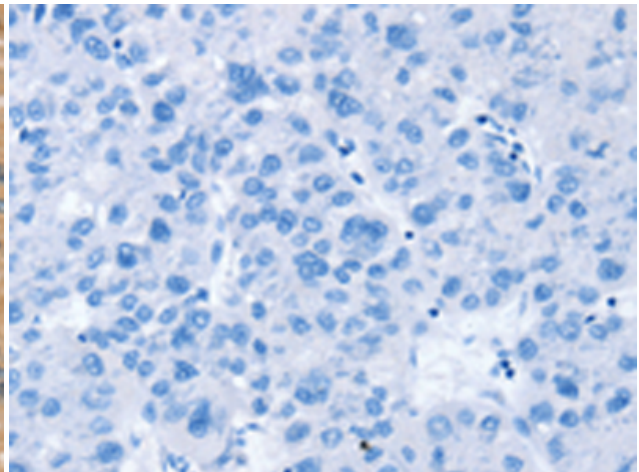
Immunohistochemistry analysis of paraffin embedded Human esophagus cancer tissue using 220849 (RBM38 Antibody) at a dilution of 1/45 (Cytoplasm).



In comparison with the IHC on the left, the same paraffin-embedded Human esophagus cancer tissue is first treated with the synthetic peptide and then with 220849 (Anti-RBM38 Antibody) at dilution 1/45.



The image on the left is immunohistochemistry of paraffin-embedded Human liver cancer tissue using 220849 (Anti-RBM38 Antibody) at a dilution of 1/45.



In comparison with the IHC on the left, the same paraffin-embedded Human liver cancer tissue is first treated with synthetic peptide and then with D262114 (Anti-RBM38 Antibody) at dilution 1/45.