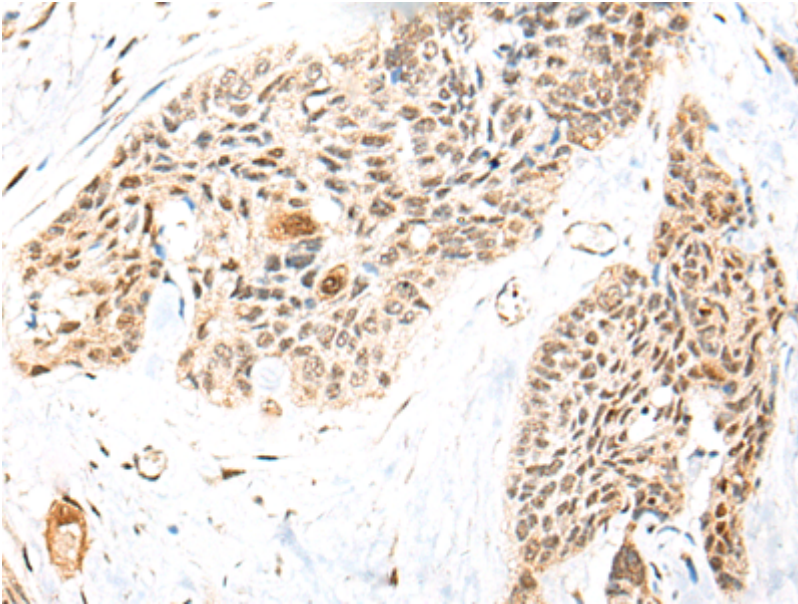


RBMS2 RABBIT PAB**Cat.#:** S216761**Product Name:** Anti-RBMS2 Rabbit Polyclonal Antibody**Synonyms:** SCR3**UNIPROT ID:** Q15434 (Gene Accession - BC027863)

Background: The protein encoded by this gene is a member of a small family of proteins which bind single stranded DNA/RNA. These proteins are characterized by the presence of two sets of ribonucleoprotein consensus sequence (RNP-CS) that contain conserved motifs, RNP1 and RNP2, originally described in RNA binding proteins, and required for DNA binding. The RBMS proteins have been implicated in such diverse functions as DNA replication, gene transcription, cell cycle progression and apoptosis. This protein was isolated by phenotypic complementation of *cdc2* and *cdc13* mutants of yeast and is thought to suppress *cdc2* and *cdc13* mutants through the induction of translation of *cdc2*.

Immunogen: Fusion protein of human RBMS2**Applications:** ELISA, IHC**Recommended Dilutions:** IHC: 25-100; ELISA: 5000-10000**Host Species:** Rabbit**Clonality:** Rabbit Polyclonal**Isotype:** Immunogen-specific rabbit IgG**Purification:** Antigen affinity purification**Species Reactivity:** Human**Constituents:** PBS (without Mg²⁺ and Ca²⁺), pH 7.4, 150 mM NaCl, 0.05% Sodium Azide and 40% glycerol**Research Areas:** Epigenetics and Nuclear Signaling**Storage & Shipping:** Store at -20°C. Avoid repeated freezing and thawing



Immunohistochemistry analysis of paraffin-embedded Human esophagus cancer tissue using 216761(RBMS2 Antibody) at a dilution of 1/35(Cytoplasm and Nucleus).