

## RBX1 RABBIT PAB

**Cat.#:** S218943

**Product Name:** Anti-RBX1 Rabbit Polyclonal Antibody

**Synonyms:** ROC1; RNF75; BA554C12.1

**UNIPROT ID:** P62877 (Gene Accession - BC001466 )

**Background:** This locus encodes a RING finger-like domain-containing protein. The encoded protein interacts with cullin proteins and likely plays a role in ubiquitination processes necessary for cell cycle progression. This protein may also affect protein turnover. Related pseudogenes exist on chromosomes 2 and 5.

**Immunogen:** Fusion protein of human RBX1

**Applications:** ELISA, IHC

**Recommended Dilutions:** IHC: 40-200; ELISA: 5000-10000

**Host Species:** Rabbit

**Clonality:** Rabbit Polyclonal

**Isotype:** Immunogen-specific rabbit IgG

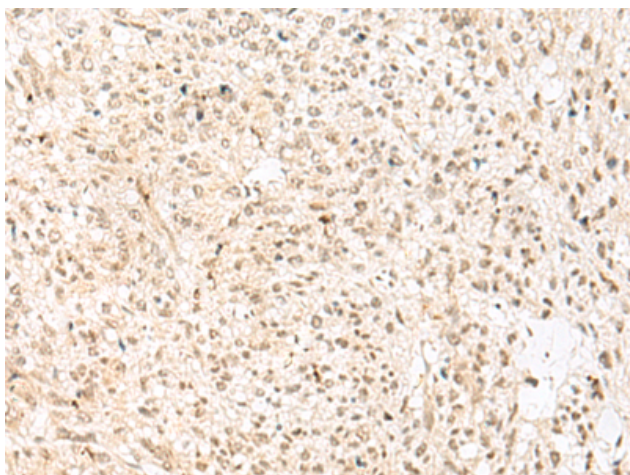
**Purification:** Antigen affinity purification

**Species Reactivity:** Human, Mouse

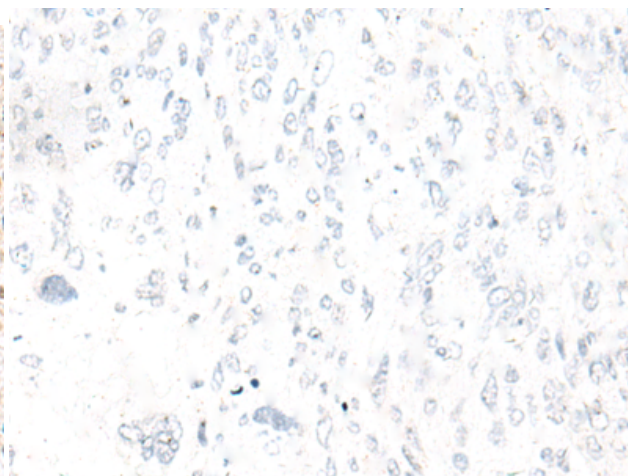
**Constituents:** PBS (without Mg<sup>2+</sup> and Ca<sup>2+</sup>), pH 7.4, 150 mM NaCl, 0.05% Sodium Azide and 40% glycerol

**Research Areas:** Epigenetics and Nuclear Signaling, Cell Biology

**Storage & Shipping:** Store at -20°C. Avoid repeated freezing and thawing



Immunohistochemistry analysis of paraffin embedded Human liver cancer tissue using 218943(RBX1 Antibody) at a dilution of 1/50(Nucleus).



In comparison with the IHC on the left, the same paraffin-embedded Human liver cancer tissue is first treated with the fusion protein and then with 218943(Anti-RBX1 Antibody) at dilution 1/50.