

RCAN2 RABBIT PAB

Cat.#: S220320

Product Name: Anti-RCAN2 Rabbit Polyclonal Antibody

Synonyms: CSP2; RCN2; MCIP2; ZAKI4; ZAKI-4; DSCR11

UNIPROT ID: Q14206 (Gene Accession - NP_001238902)

Background: This gene encodes a member of the regulator of calcineurin (RCAN) protein family. These proteins play a role in many physiological processes by binding to the catalytic domain of calcineurin A, inhibiting calcineurin-mediated nuclear translocation of the transcription factor NFATC1. Expression of this gene in skin fibroblasts is upregulated by thyroid hormone, and the encoded protein may also play a role in endothelial cell function and angiogenesis. Alternatively spliced transcript variants encoding multiple isoforms have been observed for this gene.

Immunogen: Synthetic peptide of human RCAN2

Applications: ELISA, IHC

Recommended Dilutions: IHC: 25-100; ELISA: 2000-5000

Host Species: Rabbit

Clonality: Rabbit Polyclonal

Isotype: Immunogen-specific rabbit IgG

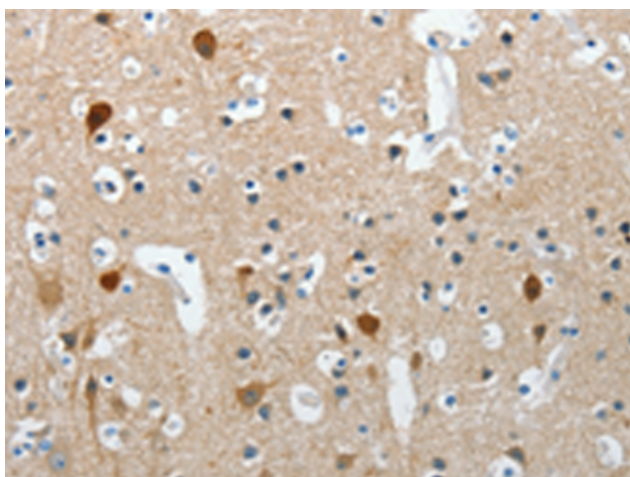
Purification: Antigen affinity purification

Species Reactivity: Human, Mouse, Rat

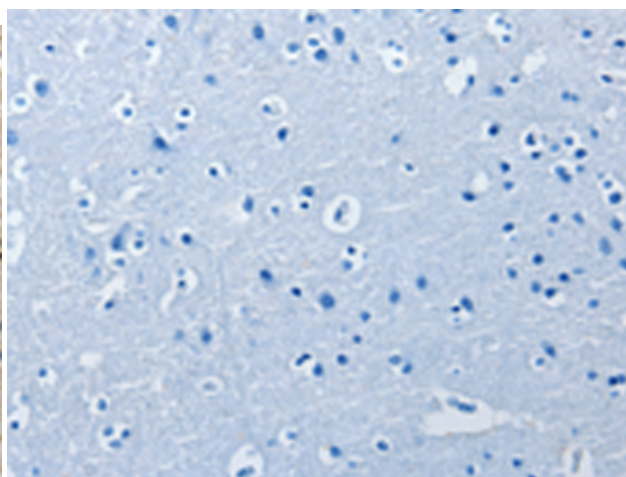
Constituents: PBS (without Mg²⁺ and Ca²⁺), pH 7.4, 150 mM NaCl, 0.05% Sodium Azide and 40% glycerol

Research Areas: Signal Transduction, Epigenetics and Nuclear Signaling, Neuroscience, Cardiovascular

Storage & Shipping: Store at -20°C. Avoid repeated freezing and thawing



Immunohistochemistry analysis of paraffin embedded Human brain tissue using 220320(RCAN2 Antibody) at a dilution of 1/20(Cytoplasm).



In comparison with the IHC on the left, the same paraffin-embedded Human brain tissue is first treated with the synthetic peptide and then with 220320(Anti-RCAN2 Antibody) at dilution 1/20.