

## RCOR2 RABBIT PAB

**Cat.#:** S221764

**Product Name:** Anti-RCOR2 Rabbit Polyclonal Antibody

**Synonyms:**

**UNIPROT ID:** Q8IZ40 (Gene Accession - NP\_775858 )

**Background:** May act as a component of a corepressor complex that represses transcription.

**Immunogen:** Synthetic peptide of human RCOR2

**Applications:** ELISA, IHC

**Recommended Dilutions:** IHC: 25-100; ELISA: 5000-10000

**Host Species:** Rabbit

**Clonality:** Rabbit Polyclonal

**Isotype:** Immunogen-specific rabbit IgG

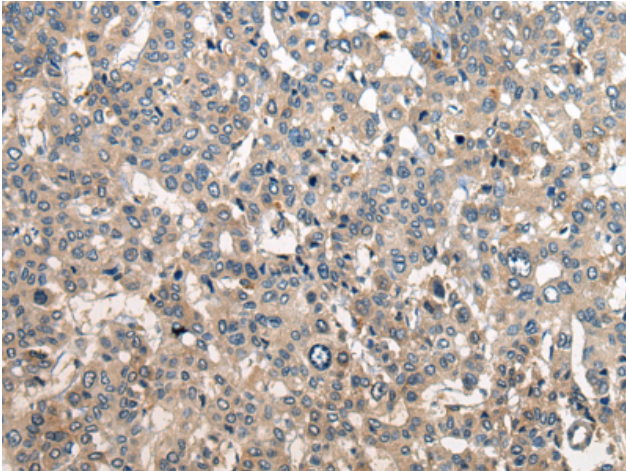
**Purification:** Antigen affinity purification

**Species Reactivity:** Human, Mouse, Rat

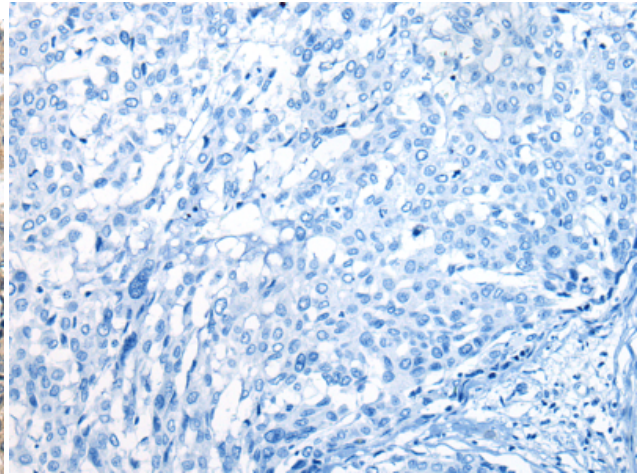
**Constituents:** PBS (without Mg<sup>2+</sup> and Ca<sup>2+</sup>), pH 7.4, 150 mM NaCl, 0.05% Sodium Azide and 40% glycerol

**Research Areas:** Epigenetics and Nuclear Signaling

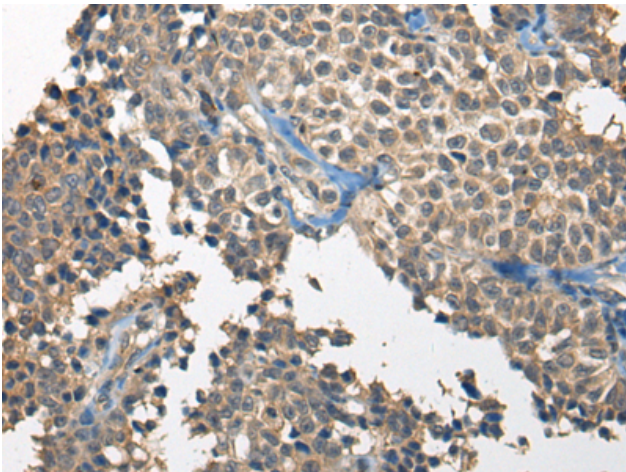
**Storage & Shipping:** Store at -20°C. Avoid repeated freezing and thawing



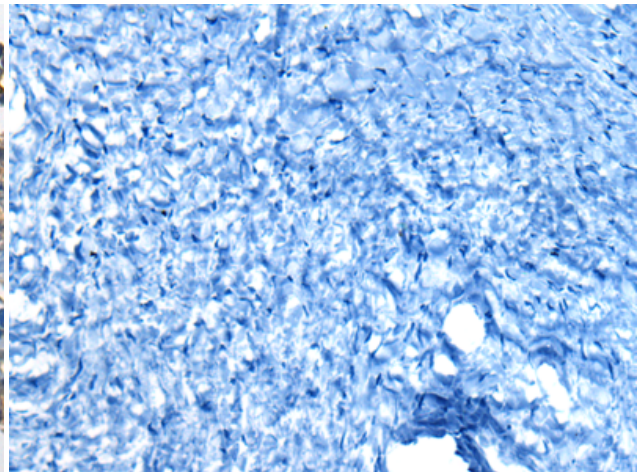
Immunohistochemistry analysis of paraffin embedded Human liver cancer tissue using 221764(RCOR2 Antibody) at a dilution of 1/25(Cytoplasm or Nucleus).



In comparison with the IHC on the left, the same paraffin-embedded Human liver cancer tissue is first treated with the synthetic peptide and then with 221764(Anti-RCOR2 Antibody) at dilution 1/25.



The image on the left is immunohistochemistry of paraffin-embedded Human ovarian cancer tissue using 221764(Anti-RCOR2 Antibody) at a dilution of 1/25.



In comparison with the IHC on the left, the same paraffin-embedded Human ovarian cancer tissue is first treated with synthetic peptide and then with D263498(Anti-RCOR2 Antibody) at dilution 1/25.