

## RDC1 RABBIT PAB

**Cat.#:** N225687

**Product Name:** Anti-RDC1 Rabbit pAb

**Synonyms:** RDC1; CXCR7; RDC-1; CMKOR1; CXC-R7; CXCR-7; GPR159

**UNIPROT ID:** P25106

**Background:** Plays a regulatory role in CXCR4-mediated activation of cell surface integrins by CXCL12. Required for heart valve development. Acts as coreceptor with CXCR4 for a restricted number of HIV isolates.

**Immunogen:** A synthesized peptide derived from human CXCR7

**Applications:** WB,FC

**Recommended Dilutions:** WB: 1/500-1/1000 FC: 1/50-1/100

**Host Species:** Rabbit

**Clonality:** Rabbit Polyclonal

**Clone ID:** -

**MW:** Calculated MW: 41 kDa; Observed MW: 41 kDa

**Isotype:** IgG

**Purification:** Affinity Chromatography

**Species Reactivity:** Human,Mouse,Rat

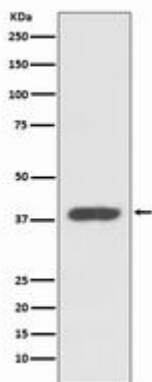
**Conjugation:** Unconjugated

**Modification:** Unmodified

**Constituents:** PBS (without Mg<sup>2+</sup> and Ca<sup>2+</sup>), pH 7.3 containing 50% glycerol, 0.5% BSA and 0.02% sodium azide

**Research Areas:** Signal Transduction

**Storage & Shipping:** Store at -20°C. Avoid repeated freezing and thawing



Western blot analysis of CXCR7 in K562 lysates using RDC1 antibody.



# Product Description

Pioneering GTPase and Oncogene Product Development since 2010

---