

REA RABBIT MAB

Cat.#: N262827

Product Name: Anti-REA Rabbit Monoclonal Antibody

Synonyms: BAP; Bap37; BCAP 37; D prohibitin; p22; Phb2; PNAS 141; Prohibitin 2

UNIPROT ID: Q99623

Background: Acts as a mediator of transcriptional repression by nuclear hormone receptors via recruitment of histone deacetylases (By similarity). Functions as an estrogen receptor (ER)-selective coregulator that potentiates the inhibitory activities of antiestrogens and represses the activity of estrogens.

Immunogen: A synthetic peptide of human REA

Applications: WB,IHC-F,IHC-P,ICC/IF

Recommended Dilutions: WB: 1/500-1/1000 IHC: 1/50-1/100 IF: 1/50-1/200

Host Species: Rabbit

Clonality: Rabbit Monoclonal

Clone ID: R01-5J9

MW: Calculated MW: 33 kDa; Observed MW: 33 kDa

Isotype: IgG

Purification: Affinity Purified

Species Reactivity: Human,Mouse,Rat

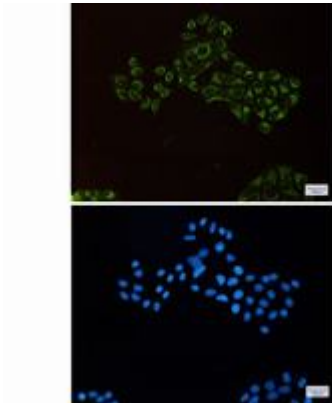
Conjugation: Unconjugated

Modification: Unmodified

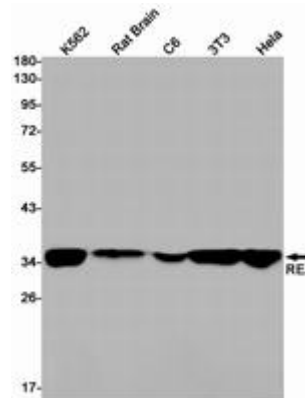
Constituents: PBS (without Mg²⁺ and Ca²⁺), pH 7.3 containing 50% glycerol, 0.5% BSA and 0.02% sodium azide

Research Areas: Signal Transduction

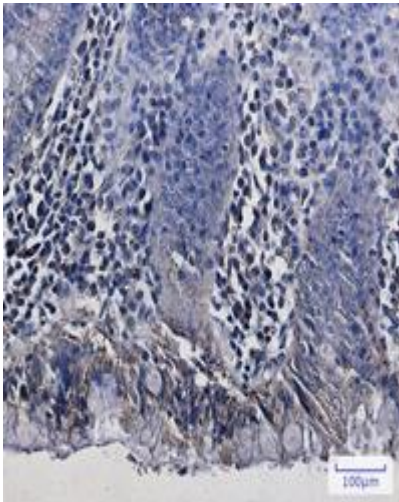
Storage & Shipping: Store at -20°C. Avoid repeated freezing and thawing



Immunocytochemistry analysis of REA (green) in HeLa using REA antibody, and DAPI (blue)



Western blot analysis of REA in K562, rat Brain, C6, 3T3, HeLa lysates using REA antibody.



Immunohistochemistry analysis of paraffin-embedded Human colon cancer using REA antibody. High-pressure and temperature Sodium Citrate pH 6.0 was used for antigen retrieval.