

## REG3G RABBIT PAB

**Cat.#:** S217603

**Product Name:** Anti-REG3G Rabbit Polyclonal Antibody

**Synonyms:** PAPIB; PAPIB; PAP IB; PAP-1B; UNQ429; LPPM429; REG III; REG-III

**UNIPROT ID:** Q6UW15 (Gene Accession - BC103854 )

**Background:** This gene encodes a member of the regenerating islet-derived genes (REG)3 protein family. These proteins are secreted, C-type lectins with a carbohydrate recognition domain and N-terminal signal peptide. The protein encoded by this gene is an antibacterial lectin with activity against Gram-positive bacteria. Alternative splicing results in multiple transcript variants encoding multiple isoforms.

**Immunogen:** Fusion protein of human REG3G

**Applications:** ELISA, WB, IHC

**Recommended Dilutions:** IHC: 100-300;WB: 500-2000;ELISA: 2000-5000

**Host Species:** Rabbit

**Clonality:** Rabbit Polyclonal

**Isotype:** Immunogen-specific rabbit IgG

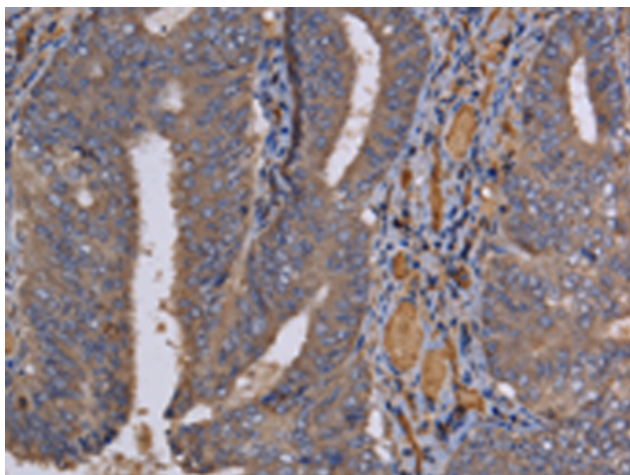
**Purification:** Antigen affinity purification

**Species Reactivity:** Human, Mouse

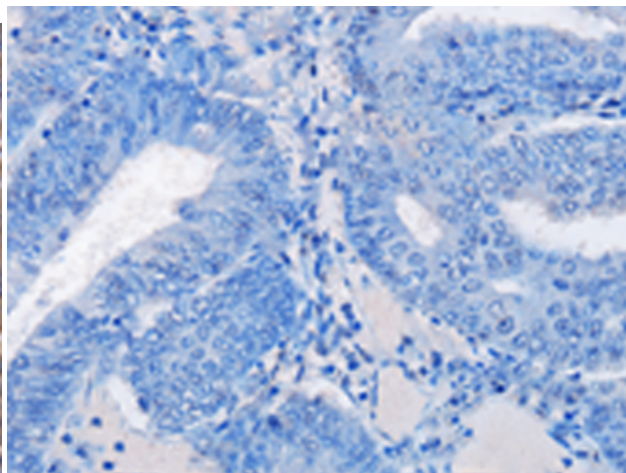
**Constituents:** PBS (without Mg<sup>2+</sup> and Ca<sup>2+</sup>), pH 7.4, 150 mM NaCl, 0.05% Sodium Azide and 40% glycerol

**Research Areas:** Immunology

**Storage & Shipping:** Store at -20°C. Avoid repeated freezing and thawing



Immunohistochemistry analysis of paraffin embedded Human colon cancer tissue using 217603(REG3G Antibody) at a dilution of 1/60(Cytoplasm).



In comparison with the IHC on the left, the same paraffin-embedded Human colon cancer tissue is first treated with the fusion protein and then with 217603(Anti-REG3G Antibody) at dilution 1/60.



Gel: 10%SDS-PAGE, Lysate: 40 µg;  
Lane: Mouse pancreas tissue;  
Primary antibody: 217603(REG3G Antibody) at dilution 1/400;  
Secondary antibody: Goat anti rabbit IgG at 1/8000 dilution;  
Exposure time: 40 seconds