

REG4 RABBIT PAB

Cat.#: S217749

Product Name: Anti-REG4 Rabbit Polyclonal Antibody

Synonyms: GISP; RELP; REG-IV

UNIPROT ID: Q9BYZ8 (Gene Accession - BC017089)

Background: Calcium-independent lectin displaying mannose-binding specificity and able to maintain carbohydrate recognition activity in an acidic environment. May be involved in inflammatory and metaplastic responses of the gastrointestinal epithelium.

Immunogen: Fusion protein of human REG4

Applications: ELISA, IHC

Recommended Dilutions: IHC: Oct-50; ELISA: 1000-2000

Host Species: Rabbit

Clonality: Rabbit Polyclonal

Isotype: Immunogen-specific rabbit IgG

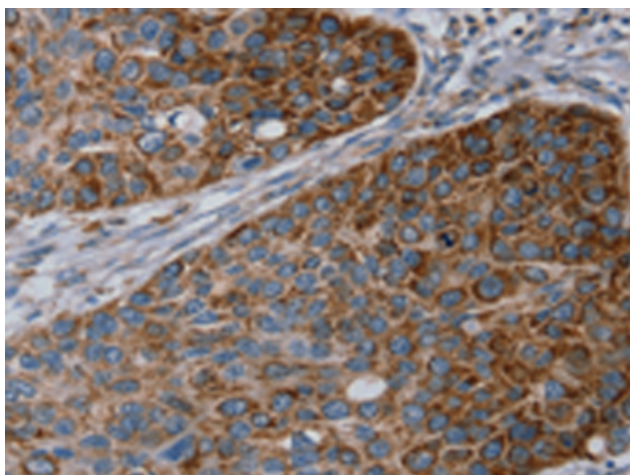
Purification: Antigen affinity purification

Species Reactivity: Human

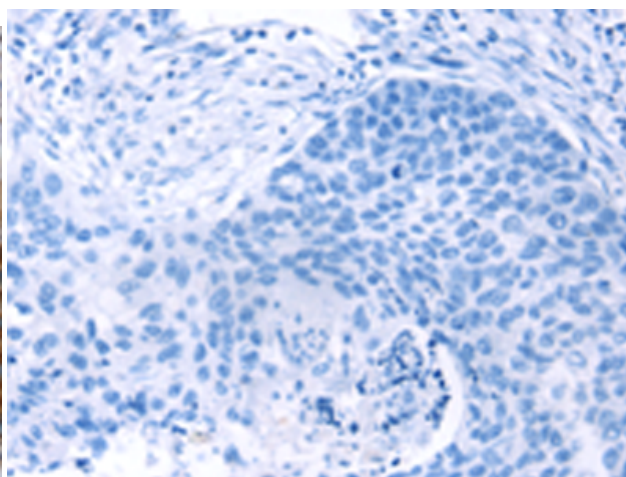
Constituents: PBS (without Mg²⁺ and Ca²⁺), pH 7.4, 150 mM NaCl, 0.05% Sodium Azide and 40% glycerol

Research Areas: Cancer, Immunology

Storage & Shipping: Store at -20°C. Avoid repeated freezing and thawing



Immunohistochemistry analysis of paraffin embedded Human esophagus cancer tissue using 217749(REG4 Antibody) at a dilution of 1/25(Cytoplasm).



In comparison with the IHC on the left, the same paraffin-embedded Human esophagus cancer tissue is first treated with the fusion protein and then with 217749(Anti-REG4 Antibody) at dilution 1/25.