

REL B RABBIT MAB

Cat.#: N262829

Product Name: Anti-Rel B Rabbit Monoclonal Antibody

Synonyms: RELB; Transcription factor RelB; I-Rel

UNIPROT ID: Q01201

Background: Transcription factors of the nuclear factor κ B (NF- κ B)/Rel family play a pivotal role in inflammatory and immune responses. Involved in many biological processes such as inflammation, immunity, differentiation, cell growth, tumorigenesis and apoptosis.

Immunogen: A synthetic peptide of human Rel B

Applications: WB,IP

Recommended Dilutions: WB: 1/500-1/1000 IP: 1/20

Host Species: Rabbit

Clonality: Rabbit Monoclonal

Clone ID: R07-9J3

MW: Calculated MW: 62 kDa; Observed MW: 62 kDa

Isotype: IgG

Purification: Affinity Purified

Species Reactivity: Human,Mouse,Rat

Conjugation: Unconjugated

Modification: Unmodified

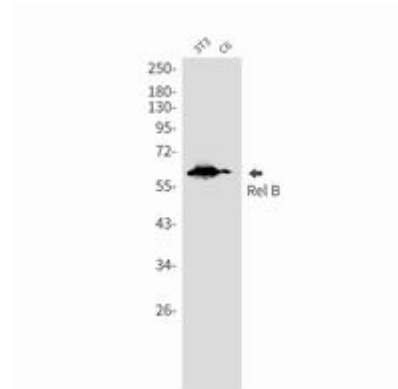
Constituents: PBS (without Mg^{2+} and Ca^{2+}), pH 7.3 containing 50% glycerol, 0.5% BSA and 0.02% sodium azide

Research Areas: Cell Biology

Storage & Shipping: Store at $-20^{\circ}C$. Avoid repeated freezing and thawing



Western blot analysis of Rel B in Raji lysates using Rel B antibody.



Western blot analysis of Rel B in 3T3, C6 lysates using Rel B antibody.