

## RERE RABBIT PAB

**Cat.#:** S220121

**Product Name:** Anti-RERE Rabbit Polyclonal Antibody

**Synonyms:** ARG; ARP; DNBI; ATNIL

**UNIPROT ID:** Q9P2R6 (Gene Accession - NP\_001036146 )

**Background:** This gene encodes a member of the atrophin family of arginine-glutamic acid (RE) dipeptide repeat-containing proteins. The encoded protein co-localizes with a transcription factor in the nucleus, and its overexpression triggers apoptosis. A similar protein in mouse associates with histone deacetylase and is thought to function as a transcriptional co-repressor during embryonic development. Multiple transcript variants encoding different isoforms have been found for this gene.

**Immunogen:** Synthetic peptide of human RERE

**Applications:** ELISA, IHC

**Recommended Dilutions:** IHC: 25-100; ELISA: 2000-5000

**Host Species:** Rabbit

**Clonality:** Rabbit Polyclonal

**Isotype:** Immunogen-specific rabbit IgG

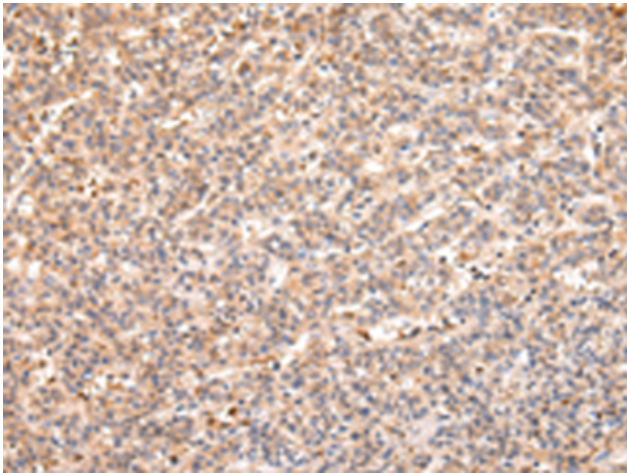
**Purification:** Antigen affinity purification

**Species Reactivity:** Human, Mouse, Rat

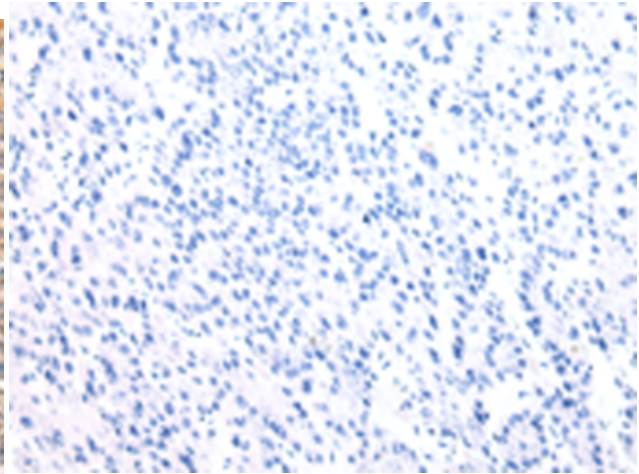
**Constituents:** PBS (without Mg<sup>2+</sup> and Ca<sup>2+</sup>), pH 7.4, 150 mM NaCl, 0.05% Sodium Azide and 40% glycerol

**Research Areas:** Epigenetics and Nuclear Signaling, Cancer

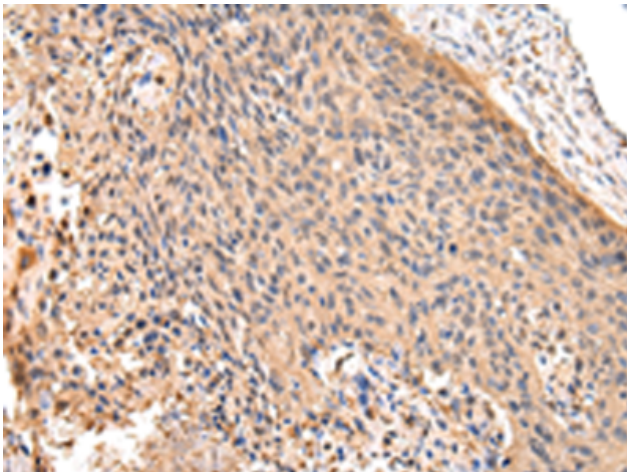
**Storage & Shipping:** Store at -20°C. Avoid repeated freezing and thawing



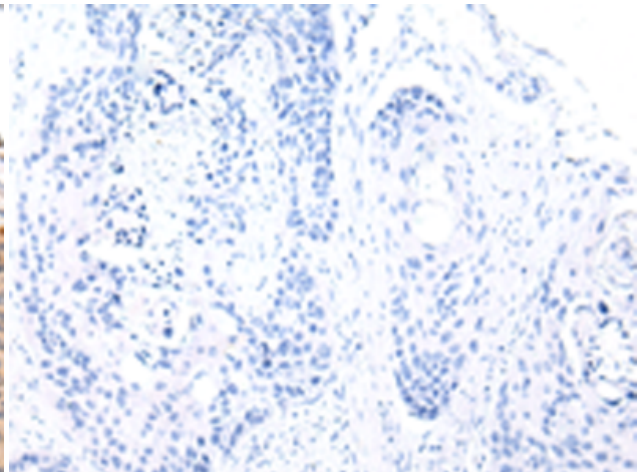
Immunohistochemistry analysis of paraffin embedded Human liver cancer tissue using 220121(RERE Antibody) at a dilution of 1/25(Cytoplasm).



In comparison with the IHC on the left, the same paraffin-embedded Human liver cancer tissue is first treated with the synthetic peptide and then with 220121(Anti-RERE Antibody) at dilution 1/25.



The image on the left is immunohistochemistry of paraffin-embedded Human esophagus cancer tissue using 220121(Anti-RERE Antibody) at a dilution of 1/25.



In comparison with the IHC on the left, the same paraffin-embedded Human esophagus cancer tissue is first treated with synthetic peptide and then with D260982(Anti-RERE Antibody) at dilution 1/25.