

RETREG1 RABBIT PAB

Cat.#: S219054

Product Name: Anti-RETREG1 Rabbit Polyclonal Antibody

Synonyms: JK1; JK-1; FAM134B

UNIPROT ID: Q9H6L5 (Gene Accession - BC030517)

Background: The protein encoded by this gene is a cis-Golgi transmembrane protein that may be necessary for the long-term survival of nociceptive and autonomic ganglion neurons. Mutations in this gene are a cause of hereditary sensory and autonomic neuropathy type IIB (HSAN IIB), and this gene may also play a role in susceptibility to vascular dementia. Alternatively spliced transcript variants encoding multiple isoforms have been observed for this gene.

Immunogen: Fusion protein of human RETREG1

Applications: ELISA, WB, IHC

Recommended Dilutions: IHC: 50-300;WB: 500-2000;ELISA: 5000-10000

Host Species: Rabbit

Clonality: Rabbit Polyclonal

Isotype: Immunogen-specific rabbit IgG

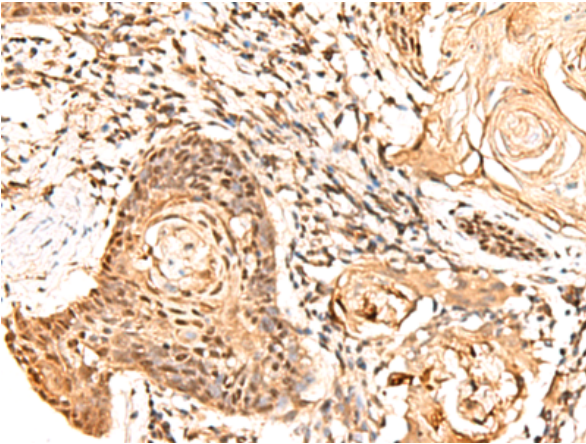
Purification: Antigen affinity purification

Species Reactivity: Human, Mouse, Rat

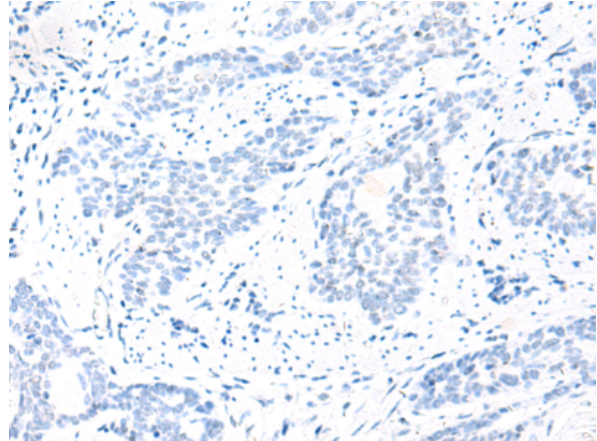
Constituents: PBS (without Mg²⁺ and Ca²⁺), pH 7.4, 150 mM NaCl, 0.05% Sodium Azide and 40% glycerol

Research Areas: Cancer

Storage & Shipping: Store at -20°C. Avoid repeated freezing and thawing



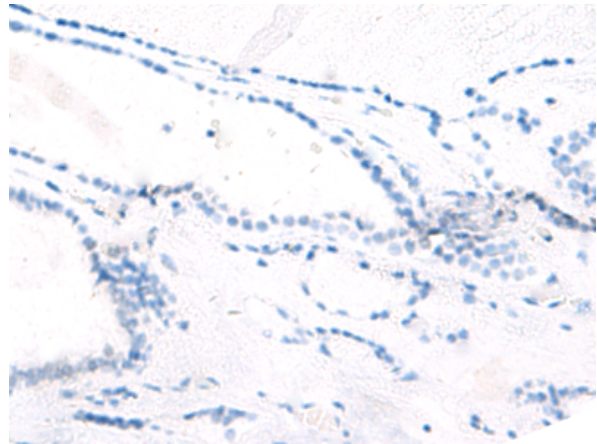
Immunohistochemistry analysis of paraffin embedded Human esophagus cancer tissue using 219054 (RETREG1 Antibody) at a dilution of 1/60 (Nucleus).



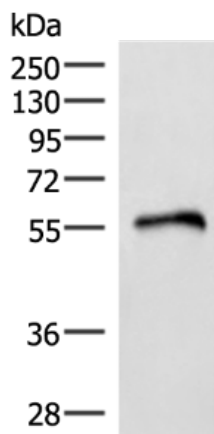
In comparison with the IHC on the left, the same paraffin-embedded Human esophagus cancer tissue is first treated with the fusion protein and then with 219054 (Anti-RETREG1 Antibody) at dilution 1/60.



The image on the left is immunohistochemistry of paraffin-embedded Human thyroid cancer tissue using 219054 (Anti-RETREG1 Antibody) at a dilution of 1/60.



In comparison with the IHC on the left, the same paraffin-embedded Human thyroid cancer tissue is first treated with fusion protein and then with D225727 (Anti-RETREG1 Antibody) at dilution 1/60.



Gel: 8% SDS-PAGE, Lysate: 40 µg;
Lane: Human heart tissue lysate;
Primary antibody: 219054 (RETREG1 Antibody) at dilution 1/400;
Secondary antibody: Goat anti rabbit IgG at 1/8000 dilution;
Exposure time: 7 seconds



Product Description

Pioneering GTPase and Oncogene Product Development since 2010
