

RFK RABBIT PAB

Cat.#: S218157

Product Name: Anti-RFK Rabbit Polyclonal Antibody

Synonyms: RIFK

UNIPROT ID: Q969G6 (Gene Accession - BC007069)

Background: Riboflavin kinase (RFK; EC 2.7.1.26) is an essential enzyme that catalyzes the phosphorylation of riboflavin (vitamin B2) to form flavin mononucleotide (FMN), an obligatory step in vitamin B2 utilization and flavin cofactor synthesis.

Immunogen: Fusion protein of human RFK

Applications: ELISA, WB, IHC

Recommended Dilutions: IHC: 50-200;WB: 500-2000;ELISA: 5000-10000

Host Species: Rabbit

Clonality: Rabbit Polyclonal

Isotype: Immunogen-specific rabbit IgG

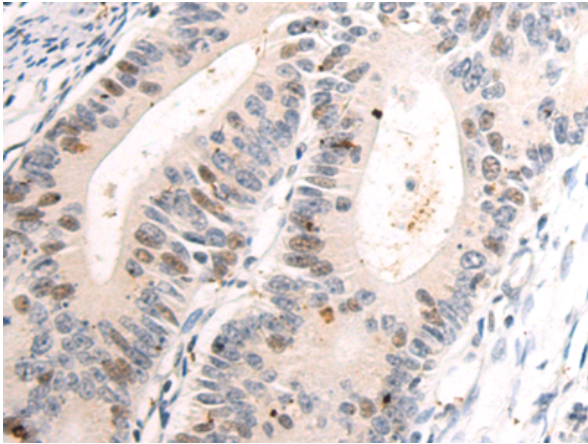
Purification: Antigen affinity purification

Species Reactivity: Human, Mouse

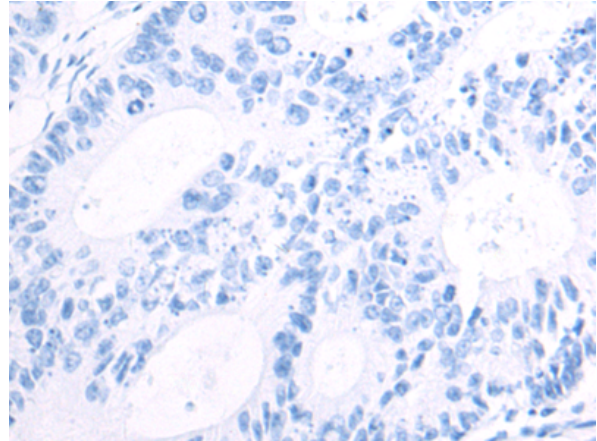
Constituents: PBS (without Mg²⁺ and Ca²⁺), pH 7.4, 150 mM NaCl, 0.05% Sodium Azide and 40% glycerol

Research Areas: Metabolism

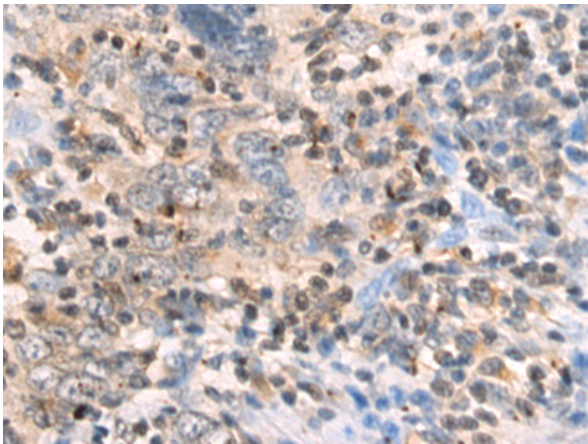
Storage & Shipping: Store at -20°C. Avoid repeated freezing and thawing



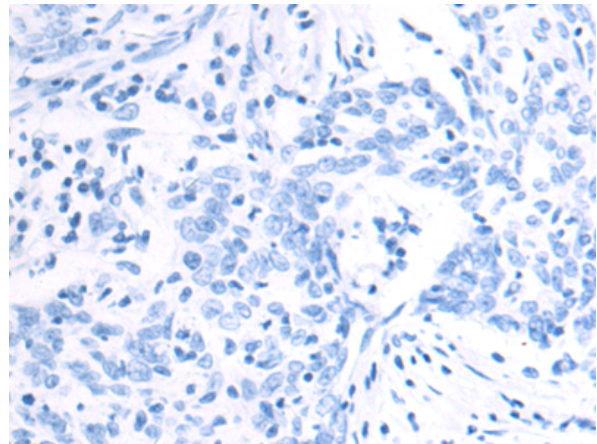
Immunohistochemistry analysis of paraffin embedded Human colorectal cancer tissue using 218157(RFK Antibody) at a dilution of 1/75(Cytoplasm and Nucleus).



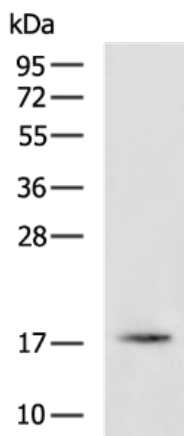
In comparison with the IHC on the left, the same paraffin-embedded Human colorectal cancer tissue is first treated with the fusion protein and then with 218157(Anti-RFK Antibody) at dilution 1/75.



The image on the left is immunohistochemistry of paraffin-embedded Human esophagus cancer tissue using 218157(Anti-RFK Antibody) at a dilution of 1/75.



In comparison with the IHC on the left, the same paraffin-embedded Human esophagus cancer tissue is first treated with fusion protein and then with D223842(Anti-RFK Antibody) at dilution 1/75.



Gel: 12%SDS-PAGE, Lysate: 40 µg;
Lane: A549 cell lysate;
Primary antibody: 218157(RFK Antibody) at dilution 1/1000;
Secondary antibody: HRP-conjugated Goat anti rabbit IgG at 1/5000 dilution;
Exposure time: 30 seconds



Product Description

Pioneering GTPase and Oncogene Product Development since 2010
