

## RGS2 RABBIT PAB

**Cat.#:** S216764

**Product Name:** Anti-RGS2 Rabbit Polyclonal Antibody

**Synonyms:** G0S8

**UNIPROT ID:** P41220 (Gene Accession - BC007049 )

**Background:** Regulator of G protein signaling (RGS) family members are regulatory molecules that act as GTPase activating proteins (GAPs) for G alpha subunits of heterotrimeric G proteins. RGS proteins are able to deactivate G protein subunits of the Gi alpha, Go alpha and Gq alpha subtypes. They drive G proteins into their inactive GDP-bound forms. Regulator of G protein signaling 2 belongs to this family. The protein acts as a mediator of myeloid differentiation and may play a role in leukemogenesis.

**Immunogen:** Fusion protein of human RGS2

**Applications:** ELISA, WB, IHC

**Recommended Dilutions:** IHC: 100–200;WB: 1000–5000;ELISA: 5000–10000

**Host Species:** Rabbit

**Clonality:** Rabbit Polyclonal

**Isotype:** Immunogen-specific rabbit IgG

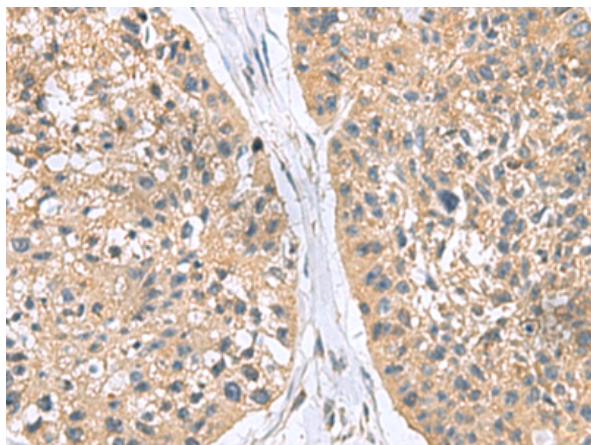
**Purification:** Antigen affinity purification

**Species Reactivity:** Human, Mouse, Rat

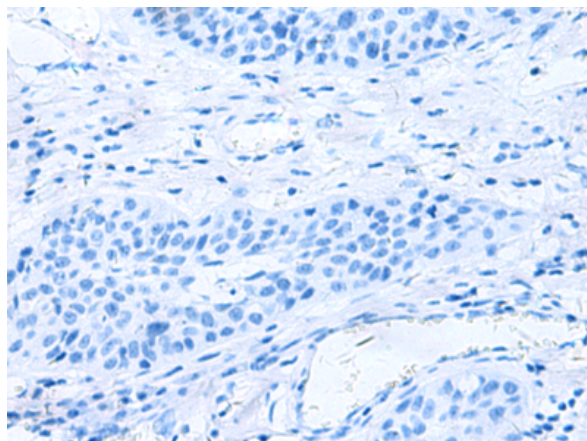
**Constituents:** PBS (without Mg<sup>2+</sup> and Ca<sup>2+</sup>), pH 7.4, 150 mM NaCl, 0.05% Sodium Azide and 40% glycerol

**Research Areas:** Signal Transduction, Epigenetics and Nuclear Signaling, Cardiovascular

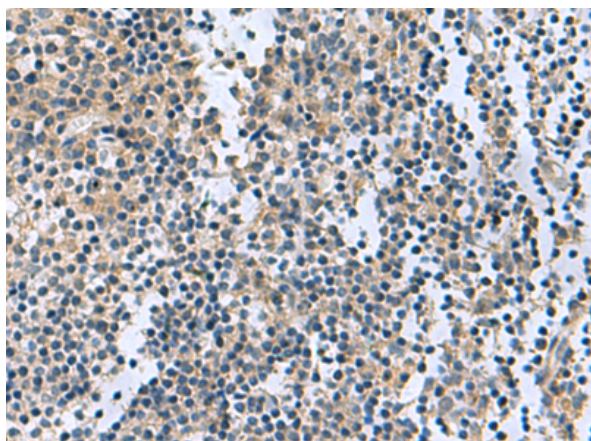
**Storage & Shipping:** Store at -20°C. Avoid repeated freezing and thawing



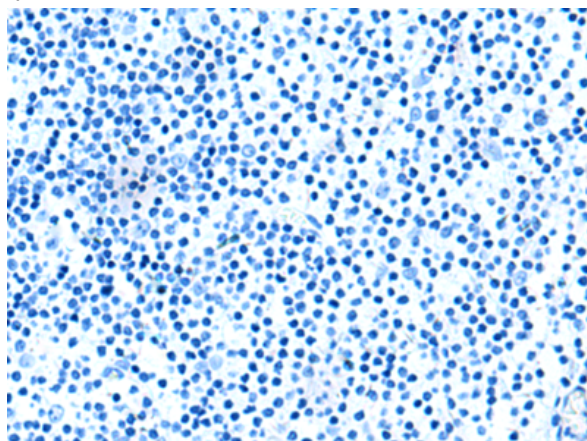
Immunohistochemistry analysis of paraffin embedded Human esophagus cancer tissue using 216764(RGS2 Antibody) at a dilution of 1/95(Cytoplasm).



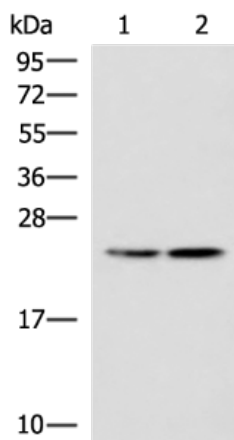
In comparison with the IHC on the left, the same paraffin-embedded Human esophagus cancer tissue is first treated with the fusion protein and then with 216764(Anti-RGS2 Antibody) at dilution 1/95.



The image on the left is immunohistochemistry of paraffin-embedded Human tonsil tissue using 216764(Anti-RGS2 Antibody) at a dilution of 1/95.



In comparison with the IHC on the left, the same paraffin-embedded Human tonsil tissue is first treated with fusion protein and then with D221197(Anti-RGS2 Antibody) at dilution 1/95.



Gel: 12%SDS-PAGE, Lysate: 40 µg;  
 Lane 1-2: A549 and A172 cell lysates;  
 Primary antibody: 216764(RGS2 Antibody) at dilution 1/1350;  
 Secondary antibody: HRP-conjugated Goat anti rabbit IgG at 1/5000 dilution;  
 Exposure time: 10 seconds



# Product Description

Pioneering GTPase and Oncogene Product Development since 2010

---