

## RHAG RABBIT PAB

**Cat.#:** S219109

**Product Name:** Anti-RHAG Rabbit Polyclonal Antibody

**Synonyms:** OHS; RH2; OHST; Rh50; CD241; RH50A; Rh50GP; SLC42A1

**UNIPROT ID:** Q02094 (Gene Accession - BC012605 )

**Background:** The protein encoded by this gene is erythrocyte-specific and is thought to be part of a membrane channel that transports ammonium and carbon dioxide across the blood cell membrane. The encoded protein appears to interact with Rh blood group antigens and Rh30 polypeptides. Defects in this gene are a cause of regulator type Rh-null hemolytic anemia (RHN), or Rh-deficiency syndrome.

**Immunogen:** Fusion protein of human RHAG

**Applications:** ELISA, WB, IHC

**Recommended Dilutions:** IHC: 50-300;WB: 1000-5000;ELISA: 5000-10000

**Host Species:** Rabbit

**Clonality:** Rabbit Polyclonal

**Isotype:** Immunogen-specific rabbit IgG

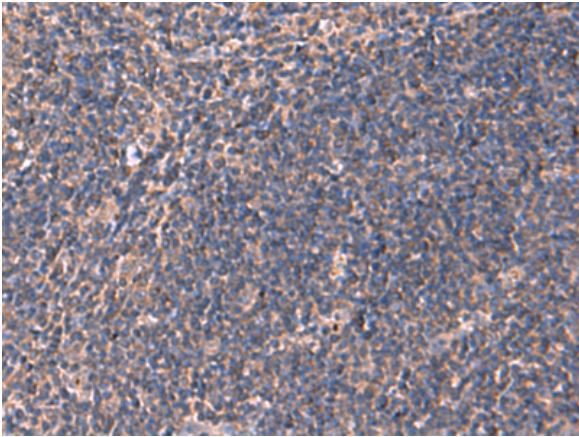
**Purification:** Antigen affinity purification

**Species Reactivity:** Human, Mouse

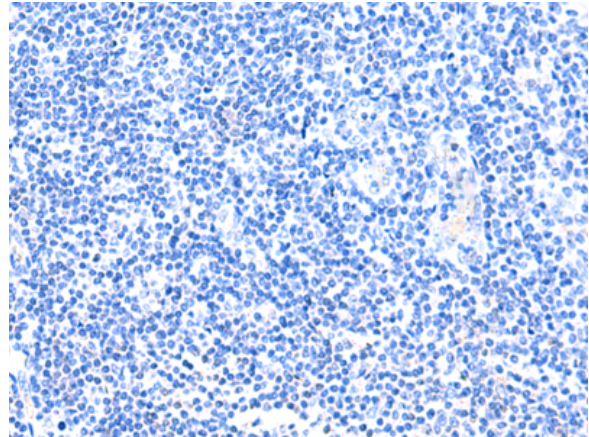
**Constituents:** PBS (without Mg<sup>2+</sup> and Ca<sup>2+</sup>), pH 7.4, 150 mM NaCl, 0.05% Sodium Azide and 40% glycerol

**Research Areas:** Cardiovascular

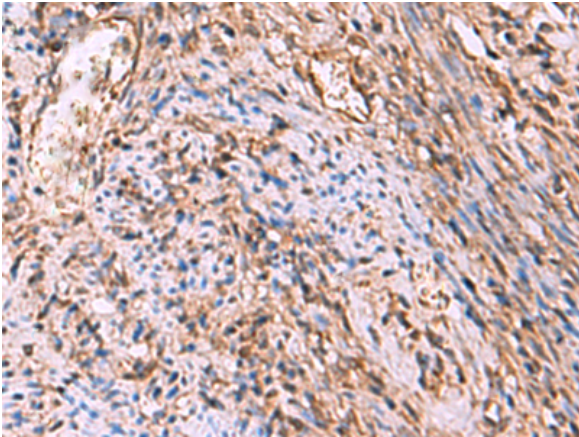
**Storage & Shipping:** Store at -20°C. Avoid repeated freezing and thawing



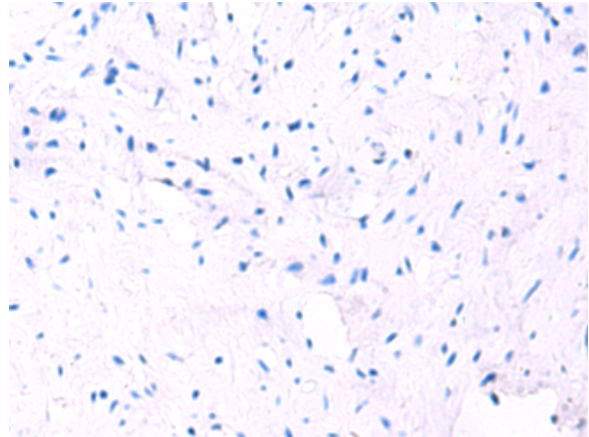
Immunohistochemistry analysis of paraffin embedded Human tonsil tissue using 219109(RHAG Antibody) at a dilution of 1/130(Cell membrane).



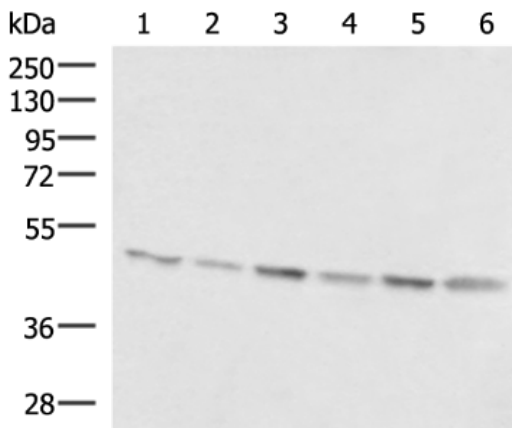
In comparison with the IHC on the left, the same paraffin-embedded Human tonsil tissue is first treated with the fusion protein and then with 219109(Anti-RHAG Antibody) at dilution 1/130.



The image on the left is immunohistochemistry of paraffin-embedded Human cervical cancer tissue using 219109(Anti-RHAG Antibody) at a dilution of 1/130.



In comparison with the IHC on the left, the same paraffin-embedded Human cervical cancer tissue is first treated with fusion protein and then with D225857(Anti-RHAG Antibody) at dilution 1/130.



Gel: 8%SDS-PAGE, Lysate: 40 µg;  
 Lane 1-6: HeLa, NIH/3T3, A172, 293T, K562 and HepG2 cell lysates;  
 Primary antibody: 219109(RHAG Antibody) at dilution 1/1600;  
 Secondary antibody: HRP-conjugated Goat anti rabbit IgG at 1/5000 dilution;  
 Exposure time: 30 seconds



# Product Description

Pioneering GTPase and Oncogene Product Development since 2010

---