

RHCG RABBIT PAB

Cat.#: S220853

Product Name: Anti-RHCG Rabbit Polyclonal Antibody

Synonyms: RHGK; PDRC2; C15orf6; SLC42A3

UNIPROT ID: Q9UBD6 (Gene Accession - NP_057405)

Background: Functions as an electroneutral and bidirectional ammonium transporter. May regulate transepithelial ammonia secretion.

Immunogen: Synthetic peptide of human RHCG

Applications: ELISA, WB, IHC

Recommended Dilutions: IHC: 25-50;WB: 500-2000;ELISA: 5000-10000

Host Species: Rabbit

Clonality: Rabbit Polyclonal

Isotype: Immunogen-specific rabbit IgG

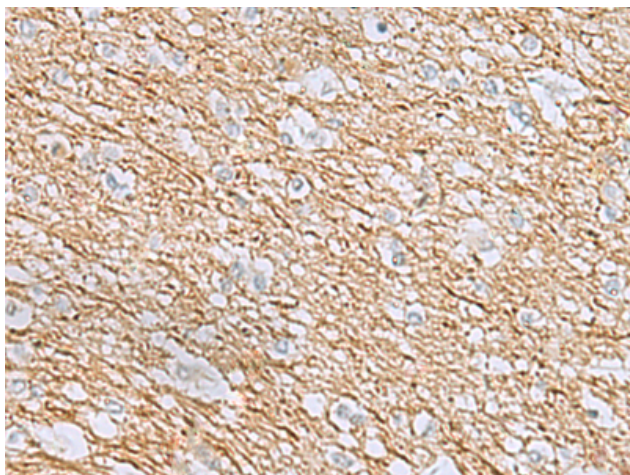
Purification: Antigen affinity purification

Species Reactivity: Human

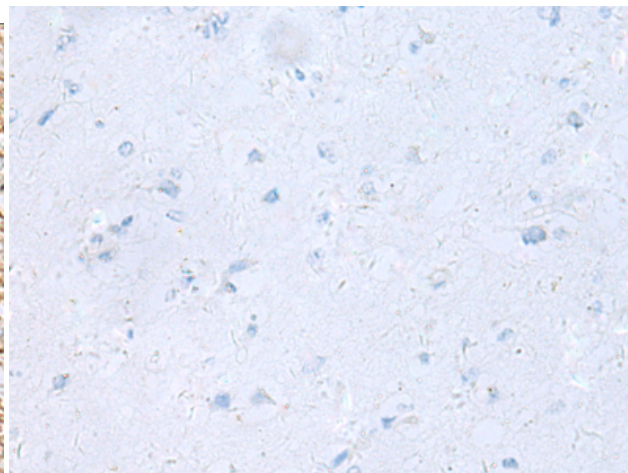
Constituents: PBS (without Mg²⁺ and Ca²⁺), pH 7.4, 150 mM NaCl, 0.05% Sodium Azide and 40% glycerol

Research Areas: Metabolism, Cancer, Cardiovascular

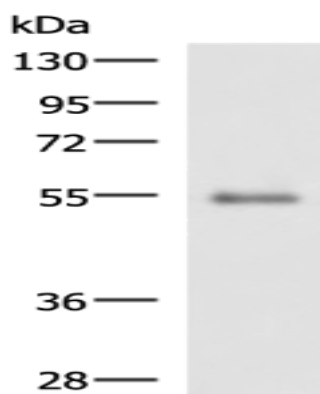
Storage & Shipping: Store at -20°C. Avoid repeated freezing and thawing



Immunohistochemistry analysis of paraffin embedded Human brain tissue using 220853(RHCG Antibody) at a dilution of 1/40(Cell membrane).



In comparison with the IHC on the left, the same paraffin-embedded Human brain tissue is first treated with the synthetic peptide and then with 220853(Anti-RHCG Antibody) at dilution 1/40.



Gel: 8%SDS-PAGE, Lysate: 40 μ g;
Lane: Human 2-3 grade invasive ductal breast tissue lysate;
Primary antibody: 220853(RHCG Antibody) at dilution 1/900;
Secondary antibody: HRP-conjugated Goat anti rabbit IgG at 1/5000 dilution;
Exposure time: 5 minutes