

## RHOA/B/C RABBIT PAB

**Cat.#:** N225549

**Product Name:** Anti-RhoA/B/C Rabbit pAb

**Synonyms:** ARH12; ARH6; ARH9; ARHA; ARHA2; H12; RHO12; Transforming protein RhoA; RHOA; RHOB; RHOC

**UNIPROT ID:** P61586/P62745/P08134

**Background:** RhoA,RhoB,RhoC is a small G protein of the Rho family. Regulates a signal transduction pathway linking plasma membrane receptors to the assembly of focal adhesions and actin stress fibers. The three mammalian Rho proteins (A, B and C) are approximately 30% homologous to Ras and are expressed in a wide range of cell types. Both Ras p21 and Rho p21, as well as other members of the Ras superfamily, contain a carboxy terminal CAAX sequence (C, cysteine; A, aliphatic amino acid; X, any amino acid) which in the case of Ras has been shown to be essential for correct localization and function.

**Immunogen:** A synthesized peptide derived from human Rho A + B + C

**Applications:** WB,IHC-P,ICC/IF,FC

**Recommended Dilutions:** WB: 1/500-1/1000 IHC: 1/50-1/100 IF: 1/50-1/200 FC: 1/50-1/100

**Host Species:** Rabbit

**Clonality:** Rabbit Polyclonal

**Clone ID:** -

**MW:** Calculated MW: 22 kDa; Observed MW: 22 kDa

**Isotype:** IgG

**Purification:** Affinity Chromatography

**Species Reactivity:** Human,Mouse,Rat

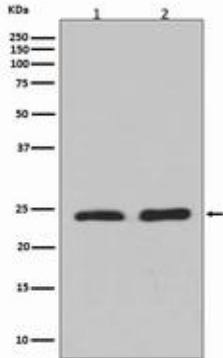
**Conjugation:** Unconjugated

**Modification:** Unmodified

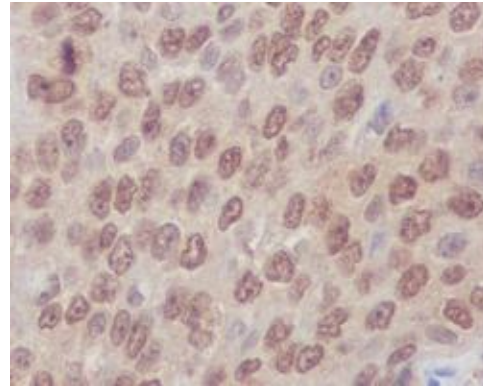
**Constituents:** PBS (without Mg<sup>2+</sup> and Ca<sup>2+</sup>), pH 7.3 containing 50% glycerol, 0.5% BSA and 0.02% sodium azide

**Research Areas:** Signal Transduction

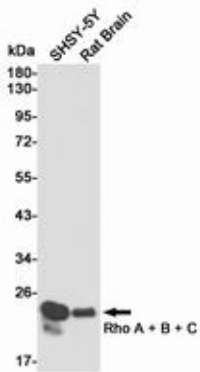
**Storage & Shipping:** Store at -20°C. Avoid repeated freezing and thawing



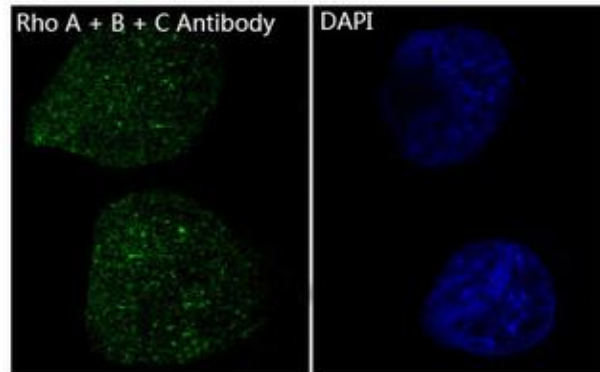
Western blot analysis of Rho A + B + C expression in (1) Jurkat lysates; (2) NIH/3T3 lysates using RhoA/B/C antibody



Immunohistochemistry analysis of paraffin-embedded Human lung carcinoma using Rho A + B + C antibody. High-pressure and temperature Sodium Citrate pH 6.0 was used for antigen retrieval.



Western blot analysis of Rho A + B + C in SH-SY5Y and rat Brain lysates using Rho A + B + C antibody.



Immunofluorescent analysis of RhoA/B/C in Hela using RhoA/B/C antibody.