

RHOGDI RABBIT MAB

Cat.#: N263531

Product Name: Anti-RhoGDI Rabbit Monoclonal Antibody

Synonyms: ARHGDI A; GDIA1; Rho GDP-dissociation inhibitor 1; Rho GDI 1; Rho-GDI alpha

UNIPROT ID: P52565

Background: Regulates the GDP/GTP exchange reaction of the Rho proteins by inhibiting the dissociation of GDP from them, and the subsequent binding of GTP to them.

Immunogen: A synthetic peptide of human RhoGDI

Applications: WB, ICC/IF

Recommended Dilutions: WB: 1/500-1/1000 IF: 1/50-1/200

Host Species: Rabbit

Clonality: Rabbit Monoclonal

Clone ID: R07-1D8

MW: Calculated MW: 23 kDa; Observed MW: 26 kDa

Isotype: IgG

Purification: Affinity Purified

Species Reactivity: Human, Mouse, Rat

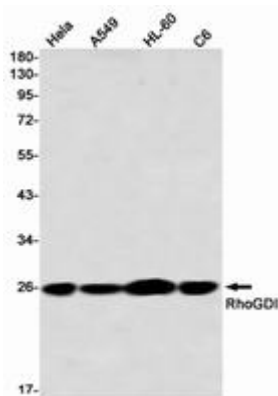
Conjugation: Unconjugated

Modification: Unmodified

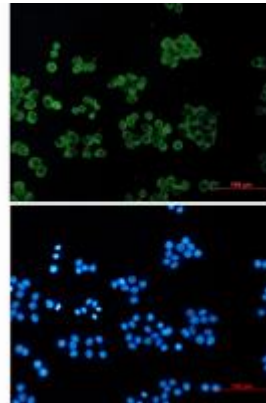
Constituents: PBS (without Mg²⁺ and Ca²⁺), pH 7.3 containing 50% glycerol, 0.5% BSA and 0.02% sodium azide

Research Areas: Signal Transduction

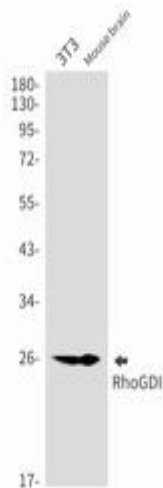
Storage & Shipping: Store at -20°C. Avoid repeated freezing and thawing



Western blot analysis of RhoGDI in HeLa, A549, HL-60, C6 lysates using RhoGDI antibody



Immunocytochemistry analysis of HeLa using RhoGDI antibody, and DAPI (blue).



Western blot analysis of RhoGDI in 3T3, mouse brain lysates using RhoGDI antibody.