

RHOV RABBIT PAB

Cat.#: S218140

Product Name: Anti-RHOV Rabbit Polyclonal Antibody

Synonyms: CHP; ARHV; WRCH2

UNIPROT ID: Q96L33 (Gene Accession - BC112945)

Background: Predicted to enable GTP binding activity and GTPase activity. Predicted to be involved in several processes, including Cdc42 protein signal transduction; cell projection assembly; and endocytosis. Predicted to be located in plasma membrane. [provided by Alliance of Genome Resources, Apr 2022]

Immunogen: Fusion protein of human RHOV

Applications: ELISA, IHC

Recommended Dilutions: IHC: 100-300; ELISA: 5000-10000

Host Species: Rabbit

Clonality: Rabbit Polyclonal

Isotype: Immunogen-specific rabbit IgG

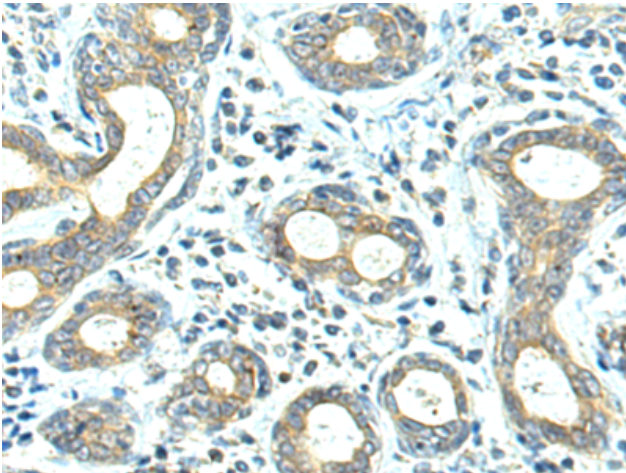
Purification: Antigen affinity purification

Species Reactivity: Human, Mouse, Rat

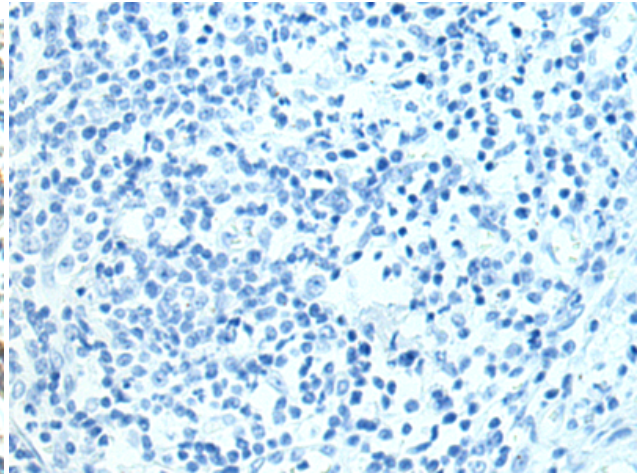
Constituents: PBS (without Mg²⁺ and Ca²⁺), pH 7.4, 150 mM NaCl, 0.05% Sodium Azide and 40% glycerol

Research Areas: Signal Transduction

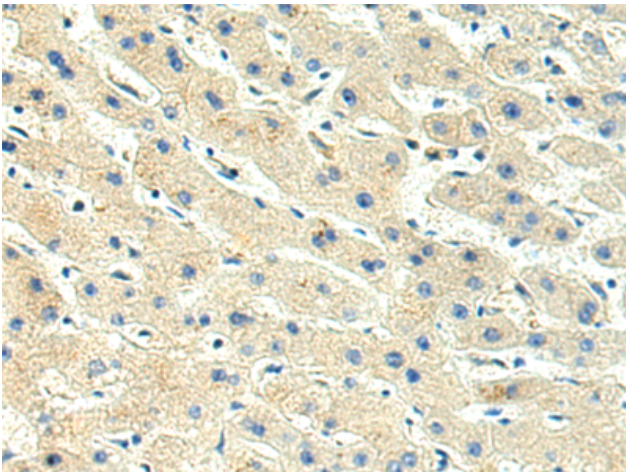
Storage & Shipping: Store at -20°C. Avoid repeated freezing and thawing



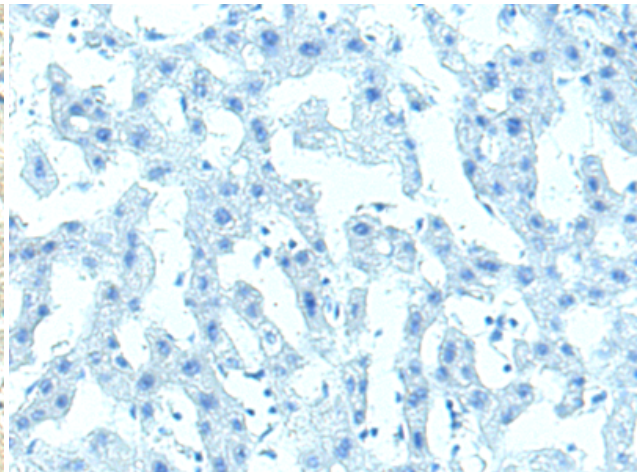
Immunohistochemistry analysis of paraffin embedded Human esophagus cancer tissue using 218140 (RHOV Antibody) at a dilution of 1/130 (Cytoplasm).



In comparison with the IHC on the left, the same paraffin-embedded Human esophagus cancer tissue is first treated with the fusion protein and then with 218140 (Anti-RHOV Antibody) at dilution 1/130.



The image on the left is immunohistochemistry of paraffin-embedded Human liver cancer tissue using 218140 (Anti-RHOV Antibody) at a dilution of 1/130.



In comparison with the IHC on the left, the same paraffin-embedded Human liver cancer tissue is first treated with fusion protein and then with D223803 (Anti-RHOV Antibody) at dilution 1/130.