

RIMKLB RABBIT PAB

Cat.#: S211830

Product Name: Anti-RIMKLB Rabbit Polyclonal Antibody

Synonyms: NAAGS; FAM80B; NAAGS-I

UNIPROT ID: Q9ULI2 (Gene Accession - BC033793)

Background: RIMKLB (ribosomal modification protein rimK-like family member B), also known as NAAGS (N-acetyl-aspartyl-glutamate synthetase B), beta-citryl-glutamate synthase B or FAM80B, is a 386 amino acid cytoplasmic protein that belongs to the rimK family. Acting as the catalyst in the synthesis of beta-citryl-glutamate and N-acetyl-aspartyl-glutamate, RIMKLB contains one ATP-grasp domain and exists as two alternatively spliced isoforms. The gene encoding RIMKLB maps to human chromosome 12, which encodes over 1,100 genes and comprises approximately 4.5% of the human genome. Chromosome 12 is associated with a variety of diseases and afflictions, including hypochondrogenesis, achondrogenesis, Kniest dysplasia, Noonan syndrome and trisomy 12p, which causes facial developmental defects and seizure disorders.

Immunogen: Full length fusion protein

Applications: ELISA, IHC

Recommended Dilutions: IHC: 25-100; ELISA: 2000-5000

Host Species: Rabbit

Clonality: Rabbit Polyclonal

Isotype: Immunogen-specific rabbit IgG

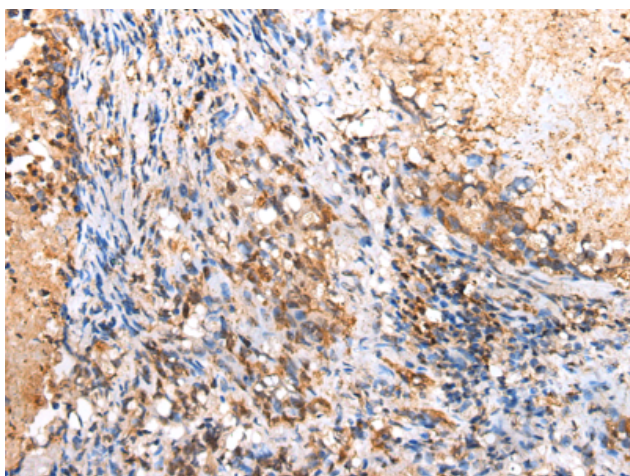
Purification: Antigen affinity purification

Species Reactivity: Human, Mouse

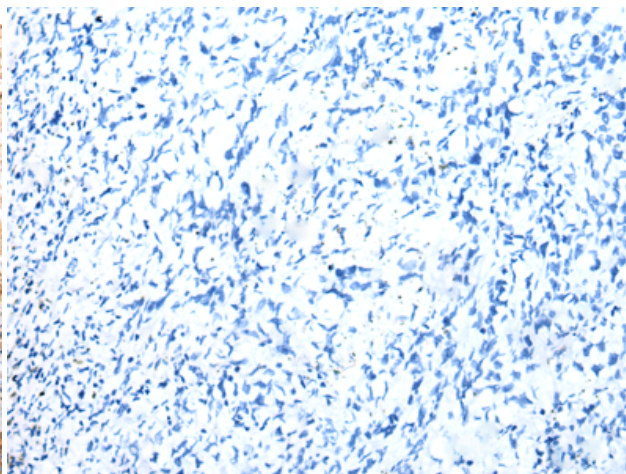
Constituents: PBS (without Mg²⁺ and Ca²⁺), pH 7.4, 150 mM NaCl, 0.05% Sodium Azide and 40% glycerol

Research Areas: Epigenetics and Nuclear Signaling

Storage & Shipping: Store at -20°C. Avoid repeated freezing and thawing



Immunohistochemistry analysis of paraffin embedded Human lung cancer tissue using 211830(RIMKLB Antibody) at a dilution of 1/30(Cytoplasm).



In comparison with the IHC on the left, the same paraffin-embedded Human lung cancer tissue is first treated with the fusion protein and then with 211830(Anti-RIMKLB Antibody) at dilution 1/30.



Product Description

Pioneering GTPase and Oncogene Product Development since 2010
