

RIMS3 RABBIT PAB

Cat.#: S218862

Product Name: Anti-RIMS3 Rabbit Polyclonal Antibody

Synonyms: NIM3; RIM3; RIM 3

UNIPROT ID: Q9UJD0 (Gene Accession - BC003103)

Background: Regulates synaptic membrane exocytosis.

Immunogen: Fusion protein of human RIMS3

Applications: ELISA, IHC

Recommended Dilutions: IHC: 50-200; ELISA: 5000-10000

Host Species: Rabbit

Clonality: Rabbit Polyclonal

Isotype: Immunogen-specific rabbit IgG

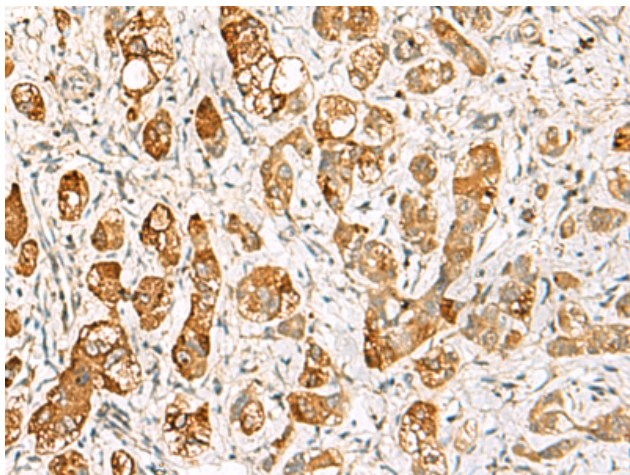
Purification: Antigen affinity purification

Species Reactivity: Human, Mouse, Rat

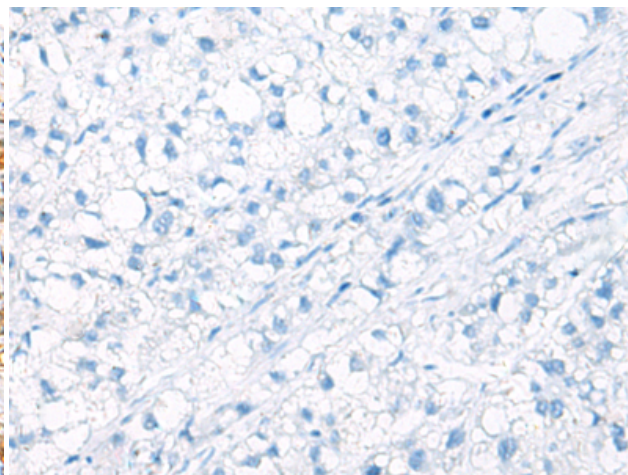
Constituents: PBS (without Mg²⁺ and Ca²⁺), pH 7.4, 150 mM NaCl, 0.05% Sodium Azide and 40% glycerol

Research Areas: Neuroscience

Storage & Shipping: Store at -20°C. Avoid repeated freezing and thawing



Immunohistochemistry analysis of paraffin embedded Human liver cancer tissue using 218862(RIMS3 Antibody) at a dilution of 1/60(Cytoplasm).



In comparison with the IHC on the left, the same paraffin-embedded Human liver cancer tissue is first treated with the fusion protein and then with 218862(Anti-RIMS3 Antibody) at dilution 1/60.