

## RIOX1 RABBIT PAB

**Cat.#:** S221639

**Product Name:** Anti-RIOX1 Rabbit Polyclonal Antibody

**Synonyms:** ROX; NO66; JMJD9; MAPJD; URLC2; hsNO66; C14orf169

**UNIPROT ID:** Q9H6W3 (Gene Accession - NP\_078920 )

**Background:** Oxygenase that can act as both a histone lysine demethylase and a ribosomal histidine hydroxylase. Specifically demethylates 'Lys-4' (H3K4me) and 'Lys-36' (H3K36me) of histone H3, thereby playing a central role in histone code. Preferentially demethylates trimethylated H3 'Lys-4' (H3K4me3) and monomethylated H3 'Lys-4' (H3K4me1) residues, while it has weaker activity for dimethylated H3 'Lys-36' (H3K36me2). Also catalyzes the hydroxylation of 60S ribosomal protein L8 on 'His-216'. Acts as a regulator of osteoblast differentiation via its interaction with SP7/OSX by demethylating H3K4me and H3K36me, thereby inhibiting SP7/OSX-mediated promoter activation (By similarity). May also play a role in ribosome biogenesis and in the replication or remodeling of certain heterochromatic region. Participates in MYC-induced transcriptional activation.

**Immunogen:** Synthetic peptide of human RIOX1

**Applications:** ELISA, IHC

**Recommended Dilutions:** IHC: 30-150; ELISA: 5000-10000

**Host Species:** Rabbit

**Clonality:** Rabbit Polyclonal

**Isotype:** Immunogen-specific rabbit IgG

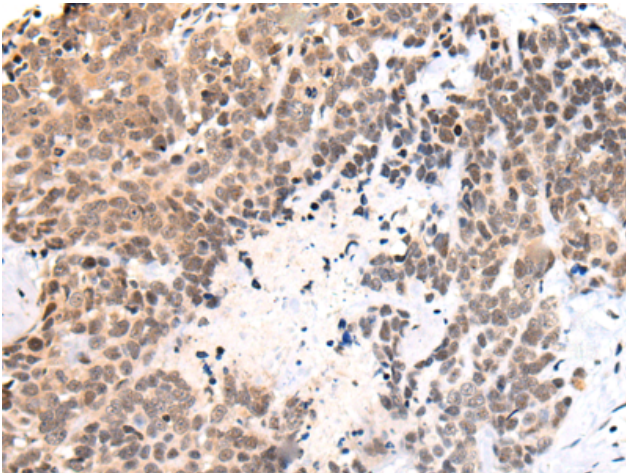
**Purification:** Antigen affinity purification

**Species Reactivity:** Human, Mouse, Rat

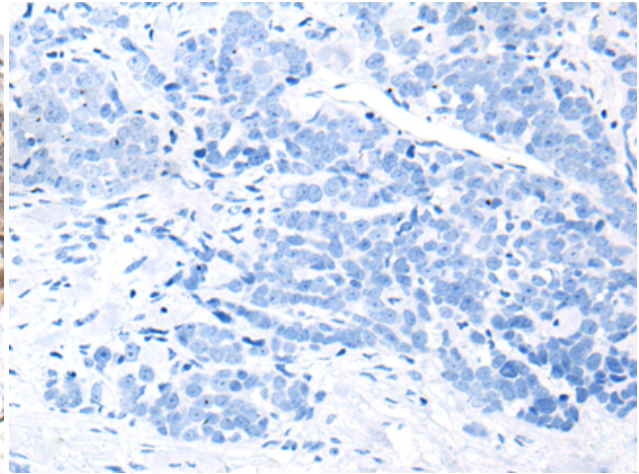
**Constituents:** PBS (without Mg<sup>2+</sup> and Ca<sup>2+</sup>), pH 7.4, 150 mM NaCl, 0.05% Sodium Azide and 40% glycerol

**Research Areas:** Epigenetics and Nuclear Signaling

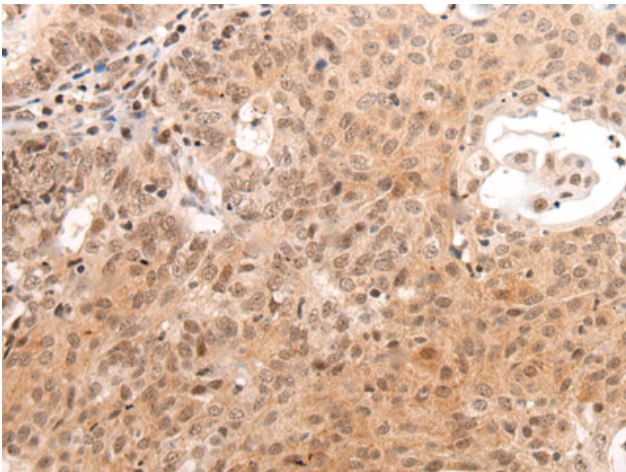
**Storage & Shipping:** Store at -20°C. Avoid repeated freezing and thawing



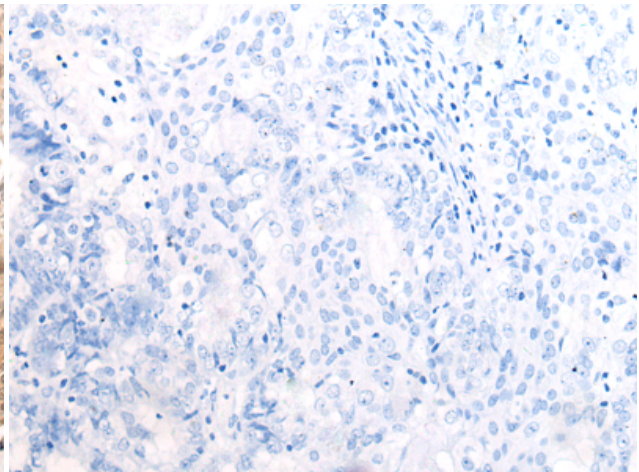
Immunohistochemistry analysis of paraffin embedded Human thyroid cancer tissue using 221639(RIOX1 Antibody) at a dilution of 1/45(Nucleus).



In comparison with the IHC on the left, the same paraffin-embedded Human thyroid cancer tissue is first treated with the synthetic peptide and then with 221639(Anti-RIOX1 Antibody) at dilution 1/45.



The image on the left is immunohistochemistry of paraffin-embedded Human ovarian cancer tissue using 221639(Anti-RIOX1 Antibody) at a dilution of 1/45.



In comparison with the IHC on the left, the same paraffin-embedded Human ovarian cancer tissue is first treated with synthetic peptide and then with D263324(Anti-RIOX1 Antibody) at dilution 1/45.