

RIPK1 RABBIT PAB

Cat.#: S217764

Product Name: Anti-RIPK1 Rabbit Polyclonal Antibody

Synonyms: RIP; RIPI; AIEFL; IMD57; RIP-1

UNIPROT ID: Q13546 (Gene Accession - BC126254)

Background: This gene encodes a member of the receptor-interacting protein (RIP) family of serine/threonine protein kinases. The encoded protein plays a role in inflammation and cell death in response to tissue damage, pathogen recognition, and as part of developmental regulation. RIPK1/RIPK3 kinase-mediated necrosis is referred to as necroptosis. Genetic disruption of this gene in mice results in death shortly after birth.

Immunogen: Fusion protein of human RIPK1

Applications: ELISA, WB, IHC

Recommended Dilutions: IHC: 50-200;WB: 500-2000;ELISA: 5000-10000

Host Species: Rabbit

Clonality: Rabbit Polyclonal

Isotype: Immunogen-specific rabbit IgG

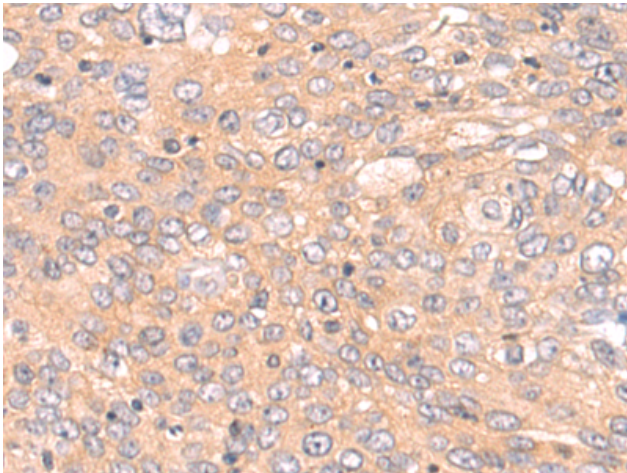
Purification: Antigen affinity purification

Species Reactivity: Human, Mouse

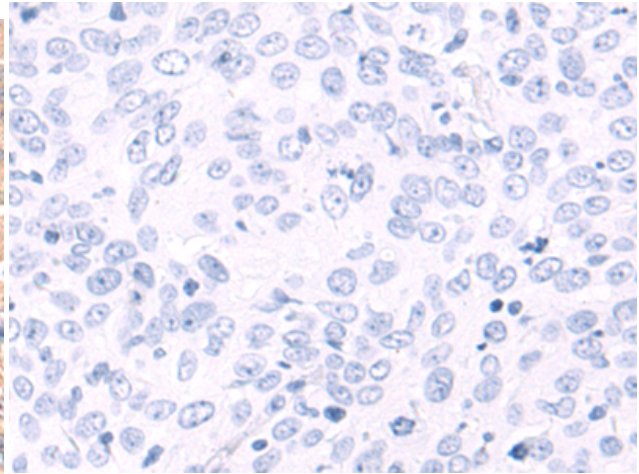
Constituents: PBS (without Mg²⁺ and Ca²⁺), pH 7.4, 150 mM NaCl, 0.05% Sodium Azide and 40% glycerol

Research Areas: Signal Transduction, Cancer

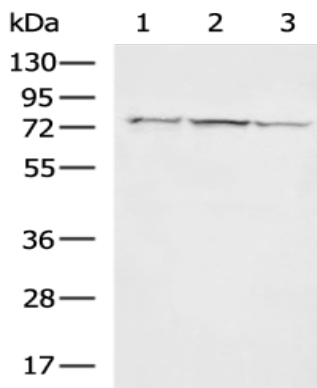
Storage & Shipping: Store at -20°C. Avoid repeated freezing and thawing



Immunohistochemistry analysis of paraffin embedded Human cervical cancer tissue using 217764(RIPK1 Antibody) at a dilution of 1/70(Cytoplasm).



In comparison with the IHC on the left, the same paraffin-embedded Human cervical cancer tissue is first treated with the fusion protein and then with 217764(Anti-RIPK1 Antibody) at dilution 1/70.



Gel: 8%SDS-PAGE, Lysate: 40 μ g;
 Lane 1-3: A549 cell, MCF7 cell, Mouse kidney tissue lysates;
 Primary antibody: 217764(RIPK1 Antibody) at dilution 1/800;
 Secondary antibody: HRP-conjugated Goat anti rabbit IgG at 1/5000 dilution;
 Exposure time: 10 seconds