

RKIP RABBIT MAB

Cat.#: N262839

Product Name: Anti-RKIP Rabbit Monoclonal Antibody

Synonyms: PEBP1; PBP; PEBP; Phosphatidylethanolamine-binding protein 1; PEBP-1; HCNPPP; Neuropolypeptide h3; Prostatic-binding protein; Raf kinase inhibitor protein; RKIP

UNIPROT ID: P30086

Background: Raf kinase inhibitor protein (RKIP) is a member of the phosphatidylethanolamine-binding protein (PEBP) family that associates with Raf-1 and the MEK and MAP kinases. RKIP has been shown to complex with Raf-1, MEK, and ERK. Although MEK and ERK can simultaneously bind RKIP, the association between Raf-1 and RKIP and that of RKIP and MEK are mutually exclusive. Thus, RKIP competitively disrupts the Raf-1-MEK complex and effectively terminates signal transmission from Raf-1 to MAP kinases.

Immunogen: A synthetic peptide of human RKIP

Applications: WB,IHC-P,IP

Recommended Dilutions: WB: 1/500-1/1000 IHC: 1/50-1/100 IP: 1/20

Host Species: Rabbit

Clonality: Rabbit Monoclonal

Clone ID: R09-4C5

MW: Calculated MW: 21 kDa; Observed MW: 21 kDa

Isotype: IgG

Purification: Affinity Purified

Species Reactivity: Human,Mouse,Rat

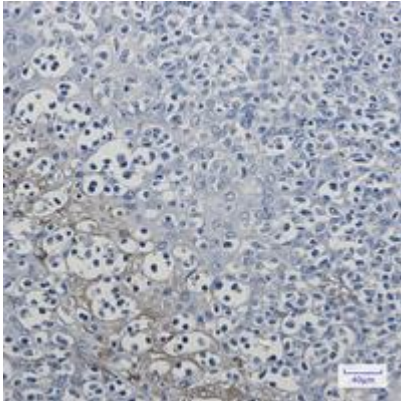
Conjugation: Unconjugated

Modification: Unmodified

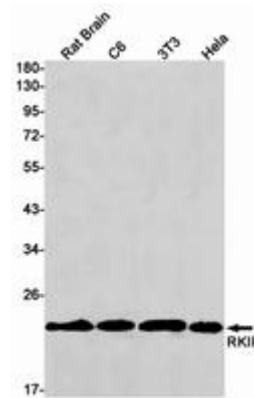
Constituents: PBS (without Mg²⁺ and Ca²⁺), pH 7.3 containing 50% glycerol, 0.5% BSA and 0.02% sodium azide

Research Areas: Immunology

Storage & Shipping: Store at -20°C. Avoid repeated freezing and thawing



Immunohistochemistry analysis of paraffin-embedded Human tonsil using RKIP antibody. High-pressure and temperature Sodium Citrate pH 6.0 was used for antigen retrieval.



Western blot analysis of RKIP in rat Brain, C6, 3T3, HeLa lysates using RKIP antibody.