

## RMND5A RABBIT PAB

**Cat.#:** S218871

**Product Name:** Anti-RMND5A Rabbit Polyclonal Antibody

**Synonyms:** CTLH; GID2; RMD5; GID2A; p44CTLH

**UNIPROT ID:** Q9H871 (Gene Accession - BC012165 )

**Background:** The function of this protein remains unknown.

**Immunogen:** Fusion protein of human RMND5A

**Applications:** ELISA, IHC

**Recommended Dilutions:** IHC: 40-200; ELISA: 5000-10000

**Host Species:** Rabbit

**Clonality:** Rabbit Polyclonal

**Isotype:** Immunogen-specific rabbit IgG

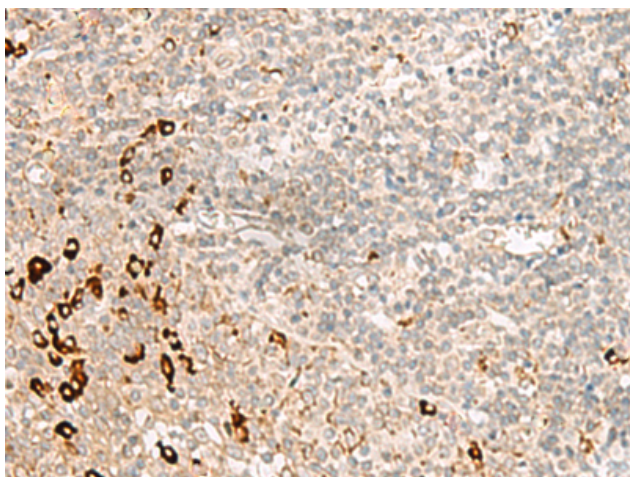
**Purification:** Antigen affinity purification

**Species Reactivity:** Human, Mouse

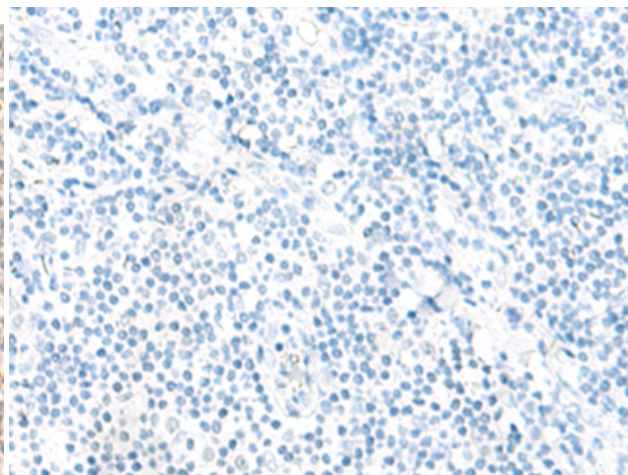
**Constituents:** PBS (without Mg<sup>2+</sup> and Ca<sup>2+</sup>), pH 7.4, 150 mM NaCl, 0.05% Sodium Azide and 40% glycerol

**Research Areas:** Signal Transduction

**Storage & Shipping:** Store at -20°C. Avoid repeated freezing and thawing



Immunohistochemistry analysis of paraffin embedded Human tonsil tissue using 218871(RMND5A Antibody) at a dilution of 1/50(Cytoplasm).



In comparison with the IHC on the left, the same paraffin-embedded Human tonsil tissue is first treated with the fusion protein and then with 218871(Anti-RMND5A Antibody) at dilution 1/50.