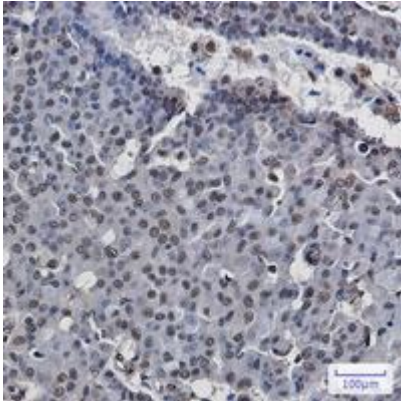


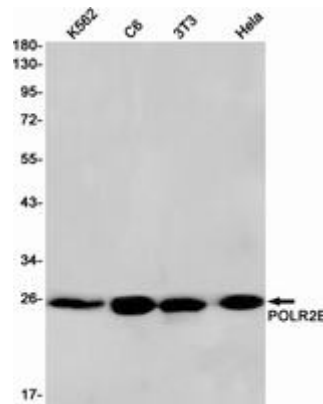
**RNA POLYMERASES I/II/III SUBUNIT ABC1 RABBIT MAB****Cat.#:** N262740**Product Name:** Anti-RNA Polymerases I/II/III Subunit ABC1 Rabbit Monoclonal Antibody**Synonyms:** RPB5; XAP4; RPABC1; hRPB25; hsRPB5**UNIPROT ID:** P19388

**Background:** DNA-dependent RNA polymerase catalyzes the transcription of DNA into RNA using the four ribonucleoside triphosphates as substrates. Common component of RNA polymerases I, II and III which synthesize ribosomal RNA precursors, mRNA precursors and many functional non-coding RNAs, and small RNAs, such as 5S rRNA and tRNAs, respectively. Pol II is the central component of the basal RNA polymerase II transcription machinery. Pols are composed of mobile elements that move relative to each other. In Pol II, POLR2E/RPB5 is part of the lower jaw surrounding the central large cleft and thought to grab the incoming DNA template. Seems to be the major component in this process .

**Immunogen:** A synthetic peptide of human POLR2E**Applications:** WB,IHC-P**Recommended Dilutions:** WB: 1/500-1/1000 IHC: 1/50-1/100**Host Species:** Rabbit**Clonality:** Rabbit Monoclonal**Clone ID:** R05-8J5**MW:** Calculated MW: 25 kDa; Observed MW: 25 kDa**Isotype:** IgG**Purification:** Affinity Purified**Species Reactivity:** Human,Mouse,Rat**Conjugation:** Unconjugated**Modification:** Unmodified**Constituents:** PBS (without Mg<sup>2+</sup> and Ca<sup>2+</sup>), pH 7.3 containing 50% glycerol, 0.5% BSA and 0.02% sodium azide**Research Areas:** Epigenetics and Nuclear Signaling**Storage & Shipping:** Store at -20°C. Avoid repeated freezing and thawing



Immunohistochemistry analysis of paraffin-embedded Human breast cancer using POLR2E antibody. High-pressure and temperature Sodium Citrate pH 6.0 was used for antigen retrieval.



Western blot analysis of POLR2E in K562, C6, 3T3, HeLa lysates using RNA Polymerases I/II/III Subunit ABC1 antibody.