

## RNF11 RABBIT PAB

**Cat.#:** S217771

**Product Name:** Anti-RNF11 Rabbit Polyclonal Antibody

**Synonyms:** CGI-123; SID1669

**UNIPROT ID:** Q9Y3C5 (Gene Accession - BC020964 )

**Background:** The protein encoded by this gene contains a RING-H2 finger motif, which is known to be important for protein-protein interactions. The expression of this gene has been shown to be induced by mutant RET proteins (MEN2A/MEN2B). The germline mutations in RET gene are known to be responsible for the development of multiple endocrine neoplasia (MEN).

**Immunogen:** Fusion protein of human RNF11

**Applications:** ELISA, IHC

**Recommended Dilutions:** IHC: 25-100; ELISA: 2000-5000

**Host Species:** Rabbit

**Clonality:** Rabbit Polyclonal

**Isotype:** Immunogen-specific rabbit IgG

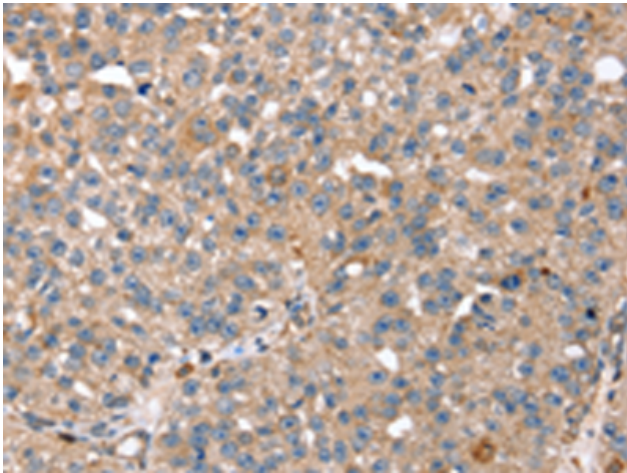
**Purification:** Antigen affinity purification

**Species Reactivity:** Human, Mouse

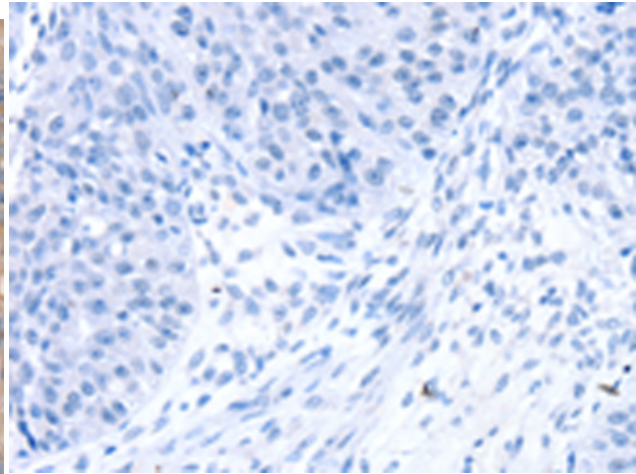
**Constituents:** PBS (without Mg<sup>2+</sup> and Ca<sup>2+</sup>), pH 7.4, 150 mM NaCl, 0.05% Sodium Azide and 40% glycerol

**Research Areas:** Epigenetics and Nuclear Signaling, Cell Biology

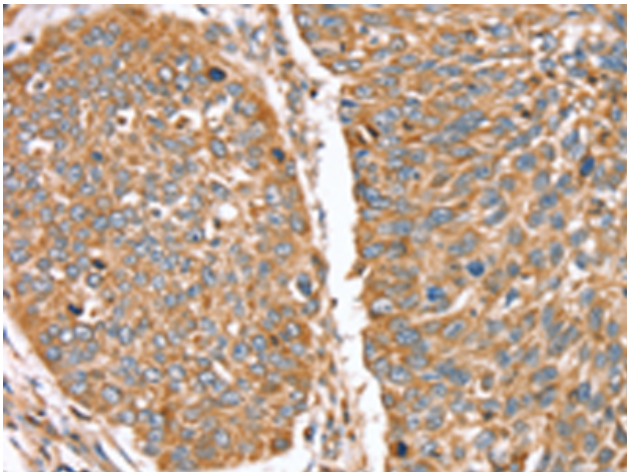
**Storage & Shipping:** Store at -20°C. Avoid repeated freezing and thawing



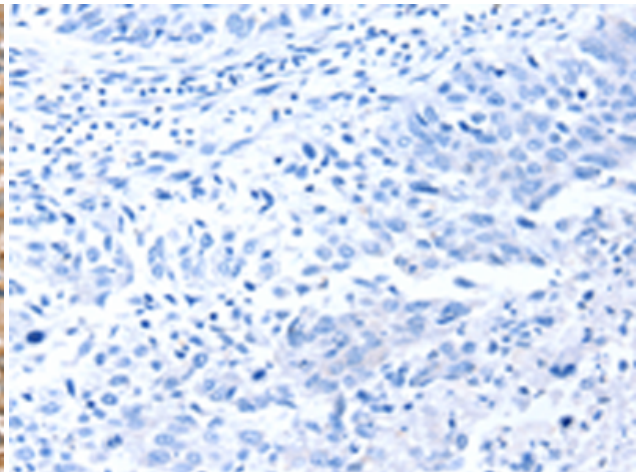
Immunohistochemistry analysis of paraffin embedded Human breast cancer tissue using 217771(RNF11 Antibody) at a dilution of 1/40(Cytoplasm).



In comparison with the IHC on the left, the same paraffin-embedded Human breast cancer tissue is first treated with the fusion protein and then with 217771(Anti-RNF11 Antibody) at dilution 1/40.



The image on the left is immunohistochemistry of paraffin-embedded Human lung cancer tissue using 217771(Anti-RNF11 Antibody) at a dilution of 1/40.



In comparison with the IHC on the left, the same paraffin-embedded Human lung cancer tissue is first treated with fusion protein and then with D223041(Anti-RNF11 Antibody) at dilution 1/40.