

## RNF13 RABBIT PAB

**Cat.#:** S219097

**Product Name:** Anti-RNF13 Rabbit Polyclonal Antibody

**Synonyms:** RZF

**UNIPROT ID:** O43567 (Gene Accession - BC009781 )

**Background:** The protein encoded by this gene contains a RING zinc finger, a motif known to be involved in protein-protein interactions. The specific function of this gene has not yet been determined. Alternatively spliced transcript variants that encode the same protein have been reported. A pseudogene, which is also located on chromosome 3, has been defined for this gene.

**Immunogen:** Fusion protein of human RNF13

**Applications:** ELISA, IHC

**Recommended Dilutions:** IHC: 40–200; ELISA: 5000–10000

**Host Species:** Rabbit

**Clonality:** Rabbit Polyclonal

**Isotype:** Immunogen-specific rabbit IgG

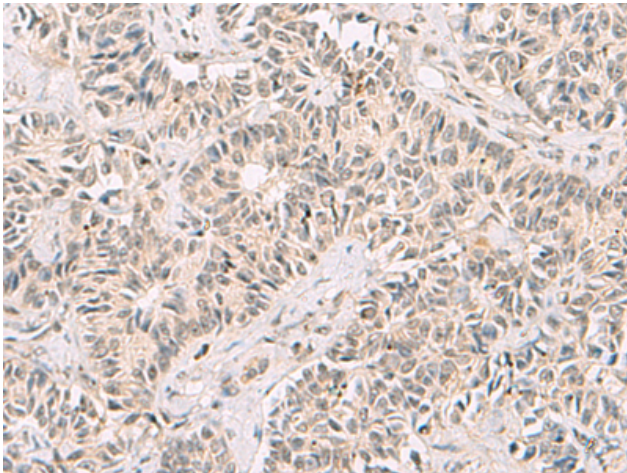
**Purification:** Antigen affinity purification

**Species Reactivity:** Human, Mouse, Rat

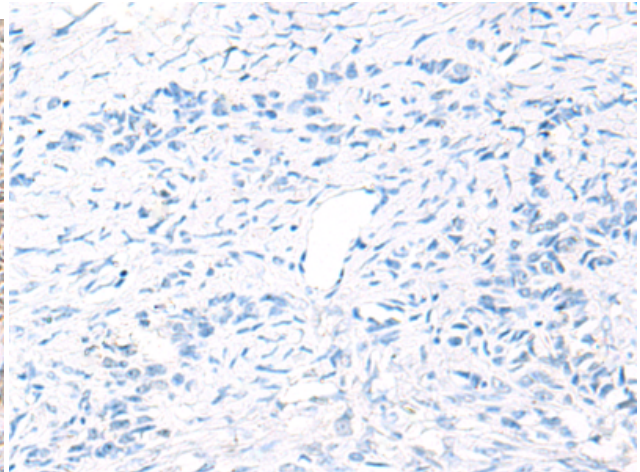
**Constituents:** PBS (without Mg<sup>2+</sup> and Ca<sup>2+</sup>), pH 7.4, 150 mM NaCl, 0.05% Sodium Azide and 40% glycerol

**Research Areas:** Cell Biology

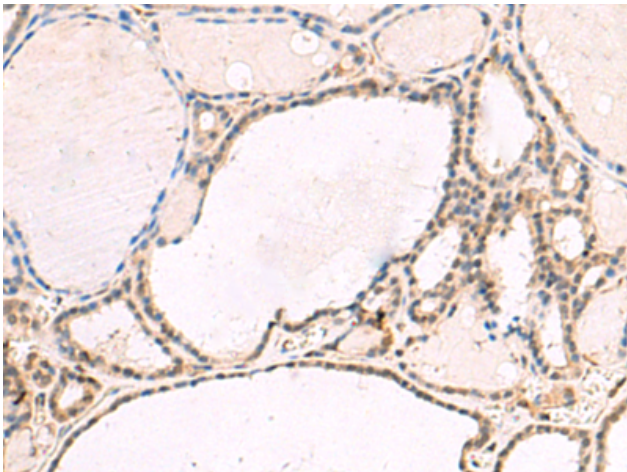
**Storage & Shipping:** Store at –20°C. Avoid repeated freezing and thawing



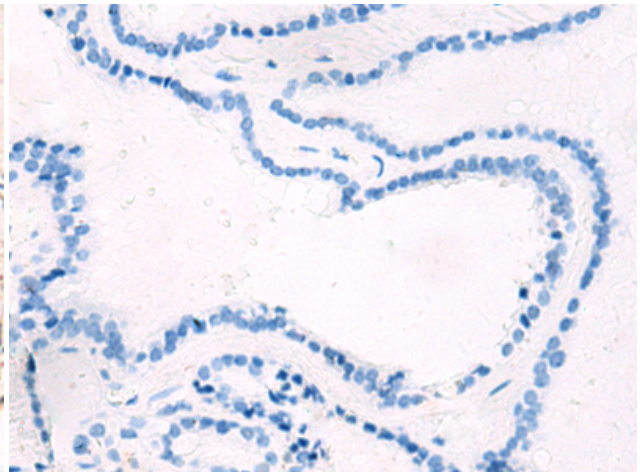
Immunohistochemistry analysis of paraffin embedded Human ovarian cancer tissue using 219097(RNF13 Antibody) at a dilution of 1/60(Cytoplasm and Nucleus).



In comparison with the IHC on the left, the same paraffin-embedded Human ovarian cancer tissue is first treated with the fusion protein and then with 219097(Anti-RNF13 Antibody) at dilution 1/60.



The image on the left is immunohistochemistry of paraffin-embedded Human thyroid cancer tissue using 219097(Anti-RNF13 Antibody) at a dilution of 1/60.



In comparison with the IHC on the left, the same paraffin-embedded Human thyroid cancer tissue is first treated with fusion protein and then with D225825(Anti-RNF13 Antibody) at dilution 1/60.