

RNF141 RABBIT PAB

Cat.#: S218198

Product Name: Anti-RNF141 Rabbit Polyclonal Antibody

Synonyms: ZFP26; RFP141; ZNF230

UNIPROT ID: Q8WVD5 (Gene Accession - BC018104)

Background: The protein encoded by this gene contains a RING finger, a motif known to be involved in protein-DNA and protein-protein interactions. Abundant expression of this gene was found in the testicular tissue of fertile men, but was not detected in azoospermic patients. Studies of the mouse counterpart suggest that this gene may function as a testis specific transcription factor during spermatogenesis. [provided by RefSeq, Jul 2008]

Immunogen: Fusion protein of human RNF141

Applications: ELISA, IHC

Recommended Dilutions: IHC: 150-300; ELISA: 5000-10000

Host Species: Rabbit

Clonality: Rabbit Polyclonal

Isotype: Immunogen-specific rabbit IgG

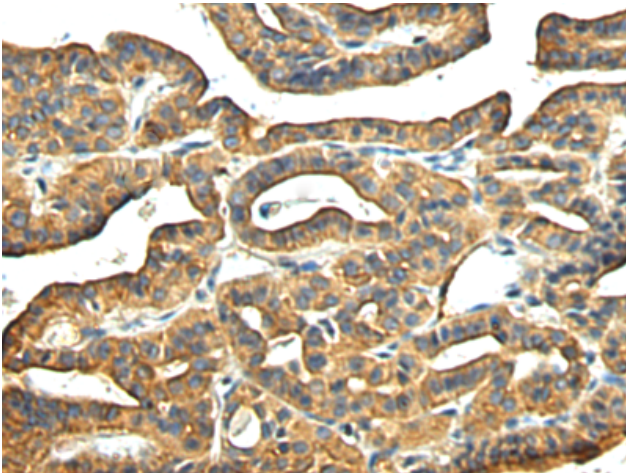
Purification: Antigen affinity purification

Species Reactivity: Human, Mouse, Rat

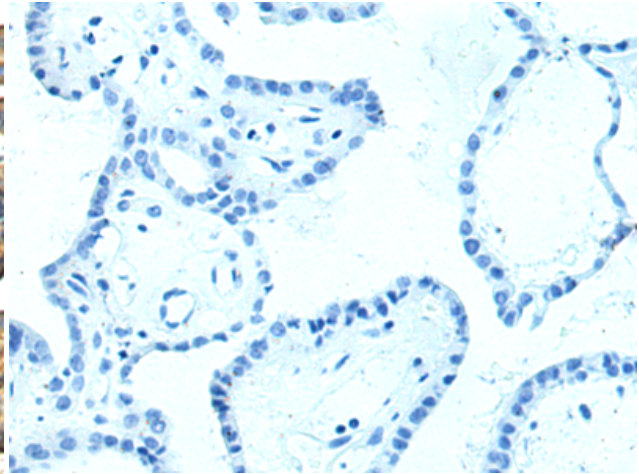
Constituents: PBS (without Mg²⁺ and Ca²⁺), pH 7.4, 150 mM NaCl, 0.05% Sodium Azide and 40% glycerol

Research Areas: Epigenetics and Nuclear Signaling

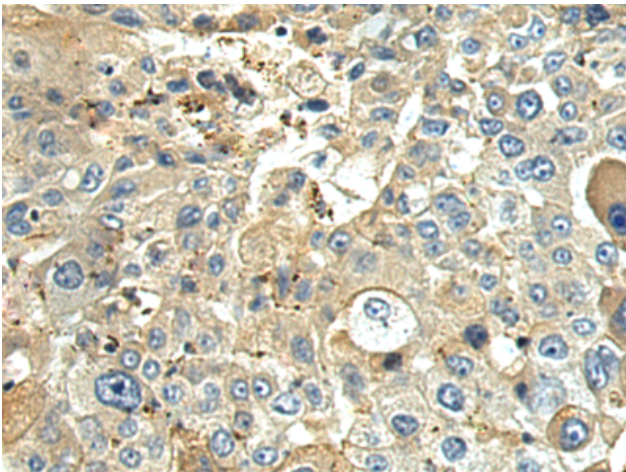
Storage & Shipping: Store at -20°C. Avoid repeated freezing and thawing



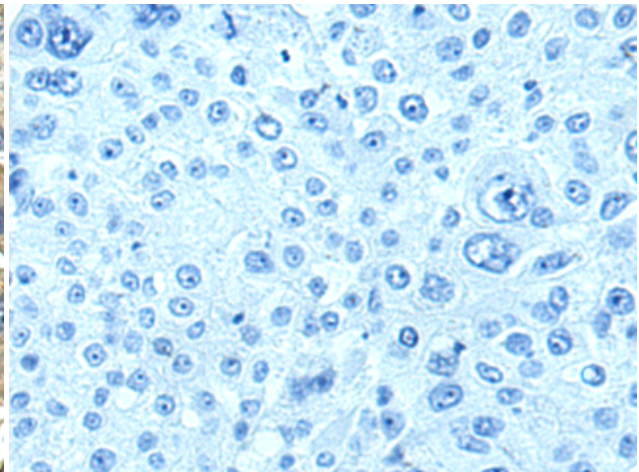
Immunohistochemistry analysis of paraffin embedded Human thyroid cancer tissue using 218198(RNF141 Antibody) at a dilution of 1/160(Cytoplasm).



In comparison with the IHC on the left, the same paraffin-embedded Human thyroid cancer tissue is first treated with the fusion protein and then with 218198(Anti-RNF141 Antibody) at dilution 1/160.



The image on the left is immunohistochemistry of paraffin-embedded Human liver cancer tissue using 218198(Anti-RNF141 Antibody) at a dilution of 1/160.



In comparison with the IHC on the left, the same paraffin-embedded Human liver cancer tissue is first treated with fusion protein and then with D223919(Anti-RNF141 Antibody) at dilution 1/160.