

## RNF20 RABBIT PAB

**Cat.#:** S217770

**Product Name:** Anti-RNF20 Rabbit Polyclonal Antibody

**Synonyms:** BRE1; BRE1A; hBRE1

**UNIPROT ID:** Q5VTR2 (Gene Accession - BC110585 )

**Background:** The protein encoded by this gene shares similarity with BRE1 of *S. cerevisiae*. The protein encoded by this human gene is an E3 ubiquitin ligase that regulates chromosome structure by monoubiquitinating histone H2B. This protein acts as a putative tumor suppressor and positively regulates the p53 tumor suppressor as well as numerous histone H2A and H2B genes. In contrast, this protein also suppresses the expression of several protooncogenes and growth-related genes, including many genes that are induced by epidermal growth factor.

**Immunogen:** Fusion protein of human RNF20

**Applications:** ELISA, WB, IHC

**Recommended Dilutions:** IHC: 20-100;WB: 1000-5000;ELISA: 2000-10000

**Host Species:** Rabbit

**Clonality:** Rabbit Polyclonal

**Isotype:** Immunogen-specific rabbit IgG

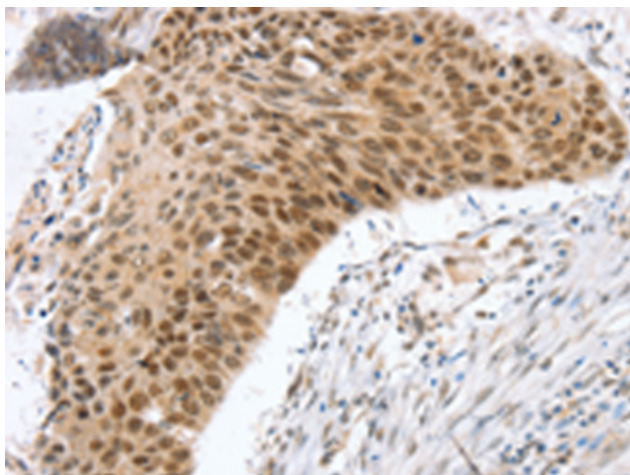
**Purification:** Antigen affinity purification

**Species Reactivity:** Human, Mouse

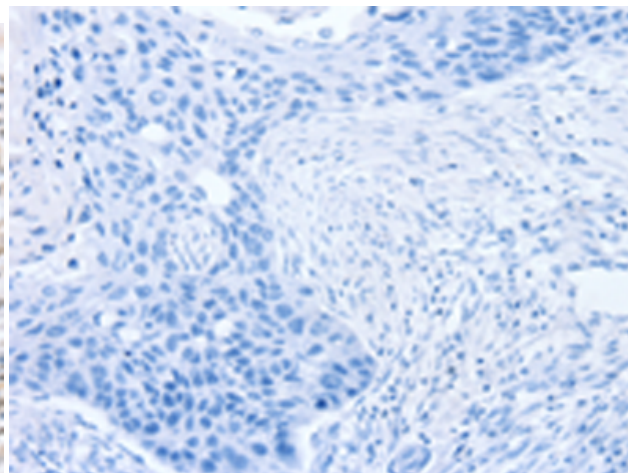
**Constituents:** PBS (without Mg<sup>2+</sup> and Ca<sup>2+</sup>), pH 7.4, 150 mM NaCl, 0.05% Sodium Azide and 40% glycerol

**Research Areas:** Epigenetics and Nuclear Signaling, Cell Biology

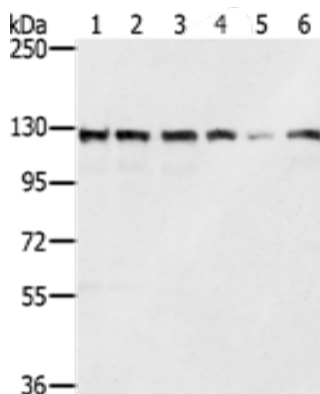
**Storage & Shipping:** Store at -20°C. Avoid repeated freezing and thawing



Immunohistochemistry analysis of paraffin embedded Human esophagus cancer tissue using 217770(RNF20 Antibody) at a dilution of 1/25(Nucleus).



In comparison with the IHC on the left, the same paraffin-embedded Human esophagus cancer tissue is first treated with the fusion protein and then with 217770(Anti-RNF20 Antibody) at dilution 1/25.



Gel: 6%SDS-PAGE, Lysate: 40  $\mu$ g;  
Lane 1-6: Lovo cells, A172 cells, A375 cells, 231 cells, Jurkat cells, hela cells;  
Primary antibody: 217770(RNF20 Antibody) at dilution 1/350;  
Secondary antibody: Goat anti rabbit IgG at 1/8000 dilution;  
Exposure time: 5 seconds