

RNF207 RABBIT PAB

Cat.#: S222041

Product Name: Anti-RNF207 Rabbit Polyclonal Antibody

Synonyms: Clorf188

UNIPROT ID: Q6ZRF8 (Gene Accession - NP_997279)

Background: Plays a role in cardiac repolarization possibly by stabilizing membrane expression of the potassium channel KCNH2/HERG, or by assisting its synthesis, folding or export from the endoplasmic reticulum, in a heat shock protein-dependent manner.

Immunogen: Synthetic peptide of human RNF207

Applications: ELISA, IHC

Recommended Dilutions: IHC: 30-150; ELISA: 5000-10000

Host Species: Rabbit

Clonality: Rabbit Polyclonal

Isotype: Immunogen-specific rabbit IgG

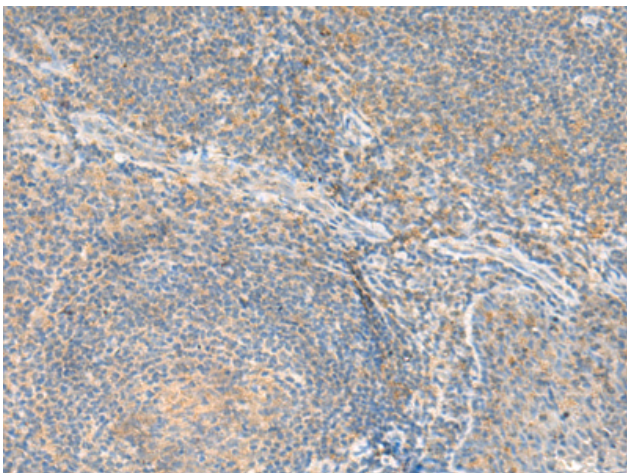
Purification: Antigen affinity purification

Species Reactivity: Human

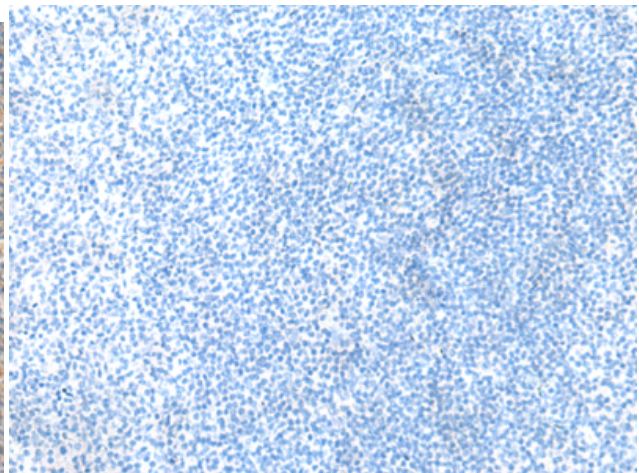
Constituents: PBS (without Mg²⁺ and Ca²⁺), pH 7.4, 150 mM NaCl, 0.05% Sodium Azide and 40% glycerol

Research Areas: Cell Biology

Storage & Shipping: Store at -20°C. Avoid repeated freezing and thawing



Immunohistochemistry analysis of paraffin embedded Human tonsil tissue using 222041(RNF207 Antibody) at a dilution of 1/80(Cytoplasm).



In comparison with the IHC on the left, the same paraffin-embedded Human tonsil tissue is first treated with the synthetic peptide and then with 222041(Anti-RNF207 Antibody) at dilution 1/80.