

RNF217 RABBIT PAB

Cat.#: S222210

Product Name: Anti-RNF217 Rabbit Polyclonal Antibody

Synonyms: OSTL; IBRDC1; C6orf172; dJ84N20.1

UNIPROT ID: Q8TC41 (Gene Accession - NP_001273327)

Background: This protein encoded by this gene is a member of the RING1-IBR-RING24 (RBR) ubiquitin protein ligase family, and it belongs to a subfamily of these proteins that contain a transmembrane domain. This protein can interact with the HAX1 anti-apoptotic protein via its C-terminal RING finger motif, which suggests a role in apoptosis signaling. It is thought that deregulation of this gene can be a mechanism in leukemogenesis. Mutations in the region encoding the protein GXXXG motif, which appears to be necessary for protein self-association, have been found in human cancers. Alternative splicing of this gene results in multiple transcript variants.

Immunogen: Synthetic peptide of human RNF217

Applications: ELISA, IHC

Recommended Dilutions: IHC: 20-100; ELISA: 5000-10000

Host Species: Rabbit

Clonality: Rabbit Polyclonal

Isotype: Immunogen-specific rabbit IgG

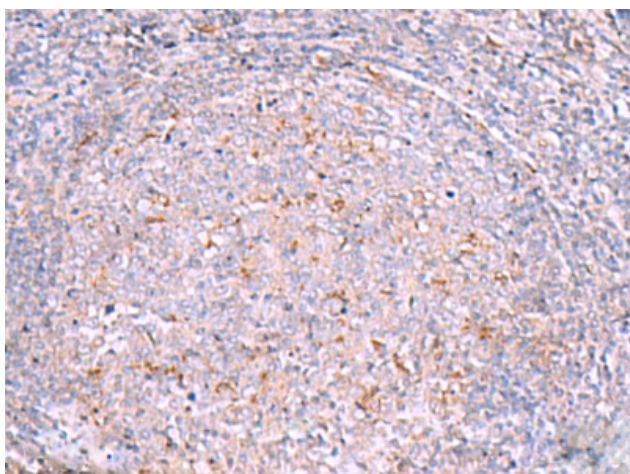
Purification: Antigen affinity purification

Species Reactivity: Human, Mouse

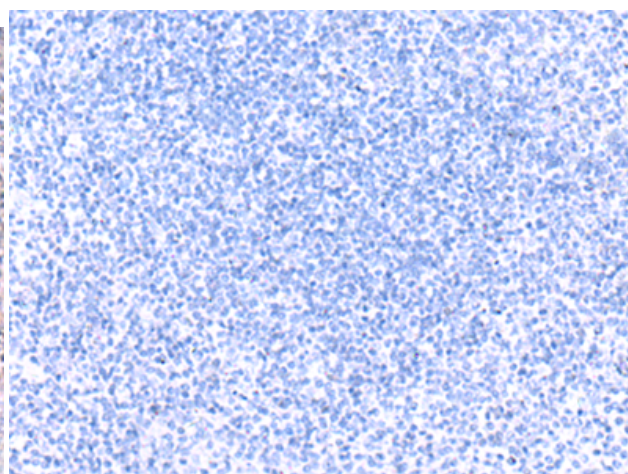
Constituents: PBS (without Mg²⁺ and Ca²⁺), pH 7.4, 150 mM NaCl, 0.05% Sodium Azide and 40% glycerol

Research Areas: Epigenetics and Nuclear Signaling

Storage & Shipping: Store at -20°C. Avoid repeated freezing and thawing



Immunohistochemistry analysis of paraffin embedded Human tonsil tissue using 222210(RNF217 Antibody) at a dilution of 1/30(Cytoplasm).



In comparison with the IHC on the left, the same paraffin-embedded Human tonsil tissue is first treated with the synthetic peptide and then with 222210(Anti-RNF217 Antibody) at dilution 1/30.



Product Description

Pioneering GTPase and Oncogene Product Development since 2010
