

## RNF24 RABBIT PAB

**Cat.#:** S218969

**Product Name:** Anti-RNF24 Rabbit Polyclonal Antibody

**Synonyms:** GIL

**UNIPROT ID:** Q9Y225 (Gene Accession - BC000213 )

**Background:** This gene encodes an integral membrane protein that contains a RING-type zinc finger. The encoded protein may interact with multiple transient receptor potential cation channel subfamily C (TRPC) proteins and regulate the trafficking and insertion of these proteins into the plasma membrane.

**Immunogen:** Fusion protein of human RNF24

**Applications:** ELISA, WB, IHC

**Recommended Dilutions:** IHC: 20-100;WB: 200-1000;ELISA: 5000-10000

**Host Species:** Rabbit

**Clonality:** Rabbit Polyclonal

**Isotype:** Immunogen-specific rabbit IgG

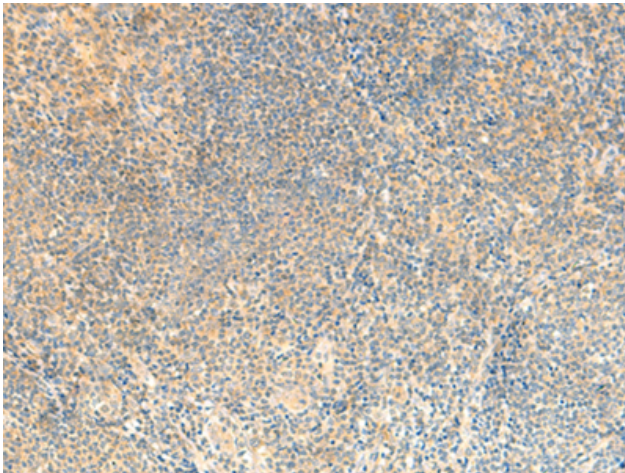
**Purification:** Antigen affinity purification

**Species Reactivity:** Human, Mouse

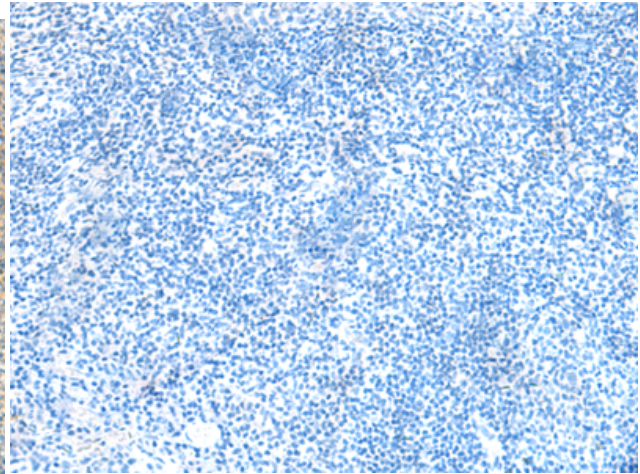
**Constituents:** PBS (without Mg<sup>2+</sup> and Ca<sup>2+</sup>), pH 7.4, 150 mM NaCl, 0.05% Sodium Azide and 40% glycerol

**Research Areas:** Epigenetics and Nuclear Signaling, Cell Biology

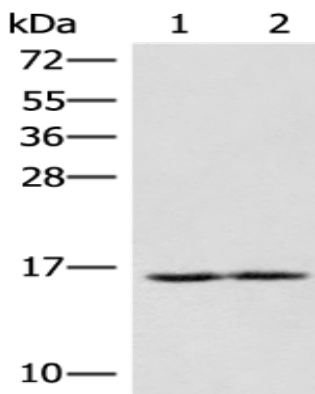
**Storage & Shipping:** Store at -20°C. Avoid repeated freezing and thawing



Immunohistochemistry analysis of paraffin embedded Human tonsil tissue using 218969(RNF24 Antibody) at a dilution of 1/25(Cytoplasm).



In comparison with the IHC on the left, the same paraffin-embedded Human tonsil tissue is first treated with the fusion protein and then with 218969(Anti-RNF24 Antibody) at dilution 1/25.



Gel: 12%SDS-PAGE, Lysate: 40  $\mu$ g;  
Lane 1-2: K562 and HL60 cell lysates;  
Primary antibody: 218969(RNF24 Antibody) at dilution 1/250;  
Secondary antibody: Goat anti rabbit IgG at 1/8000 dilution;  
Exposure time: 30 seconds